



## Submittal Data Sheets

0.6 to 2.0-Ton Concealed Floor Standing Units  
FXNQ\_MVJU9

## FEATURES

- Ideal for installation beneath a window
- Unit requires minimal installation space
- Fitted with a washable long-life filter



**VRV**







## Submittal Data Sheet

0.6-Ton Concealed Floor Standing Unit

FXNQ07MVJU9

### PERFORMANCE

Indoor Unit Model No.	FXNQ07MVJU9	Indoor Unit Name:	0.6-Ton Concealed Floor Standing Unit
Type:	Floor Standing	Rated Cooling Conditions:	Indoor (°F DB/WB): 80 / 67 Ambient (°F DB/WB): 95 / 75
Rated Cooling Capacity (Btu/hr):	7,500	Rated Heating Conditions:	Indoor (°F DB/WB): 70 / 70 Ambient (°F DB/WB): 47 / 43
Sensible Capacity (Btu/hr):	5,800	Rated Piping Length(ft):	
Cooling Input Power (kW):	0.050	Rated Height Separation (ft):	
Rated Heating Capacity (Btu/hr):	8,500		
Heating Input Power (kW):	0.05		

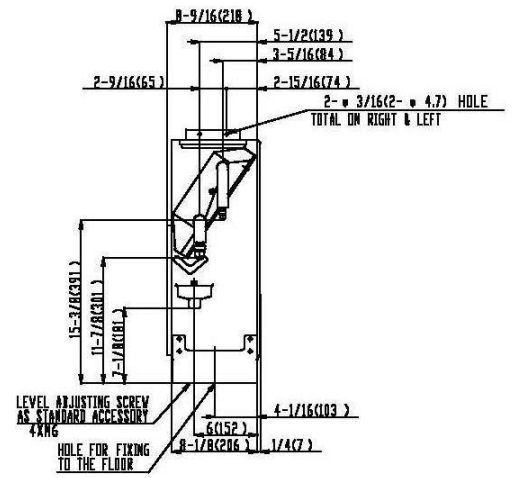
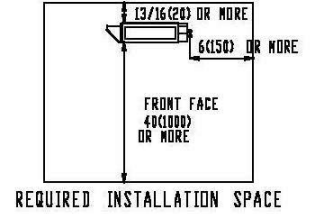
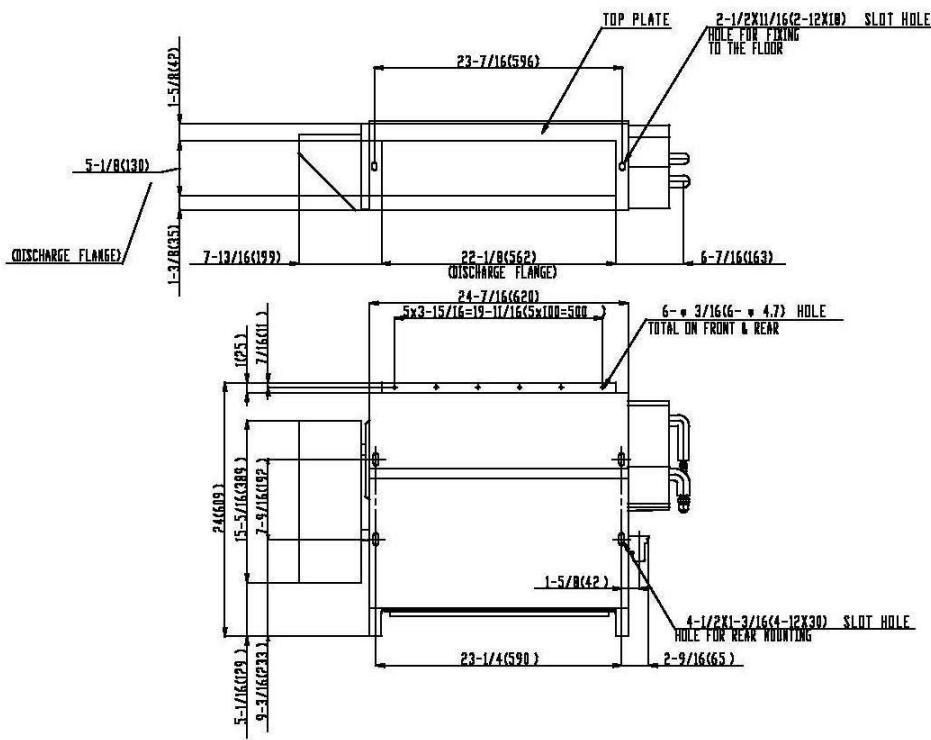
### INDOOR UNIT DETAILS

Power Supply (V/Hz/Ph):	208-230 / 60 / 1	Airflow Rate (H/L) (CFM):	245/210
Power Supply Connections:	L1, L2, Ground	Moisture Removal (Gal/hr):	
Min. Circuit Amps MCA (A):	0.30	Gas Pipe Connection (inch):	1/2
Max Overcurrent Protection (MOP) (A):	15.00	Liquid Pipe Connection (inch):	1/4
Dimensions (HxWxD) (in):	24 x 36-5/8 x 8-5/8	Condensate Connection (inch):	25/32
Panel (HxWxD) (in):		Sound Pressure (H/L) (dBA):	35/32
Net Weight (lb):	47	Sound Power Level (dBA):	
Panel Weight (lb):		Ext. Static Pressure (Rated/Max) (inWg):	0.00 / 0.00

**Submittal Data Sheet**  
 0.6-Ton Concealed Floor Standing Unit  
 FXNQ07MVJU9

**DIMENSIONAL DRAWING**

Unit : in.(mm)





## Submittal Data Sheet

0.75-Ton Concealed Floor Standing Unit

FXNQ09MVJU9

### PERFORMANCE

Indoor Unit Model No.	FXNQ09MVJU9	Indoor Unit Name:	0.75-Ton Concealed Floor Standing Unit
Type:	Floor Standing	Rated Cooling Conditions:	Indoor (°F DB/WB): 80 / 67 Ambient (°F DB/WB): 95 / 75
Rated Cooling Capacity (Btu/hr):	9,500	Rated Heating Conditions:	Indoor (°F DB/WB): 70 / 70 Ambient (°F DB/WB): 47 / 43
Sensible Capacity (Btu/hr):	7,100	Rated Piping Length(ft):	
Cooling Input Power (kW):	0.050	Rated Height Separation (ft):	
Rated Heating Capacity (Btu/hr):	10,500		
Heating Input Power (kW):	0.05		

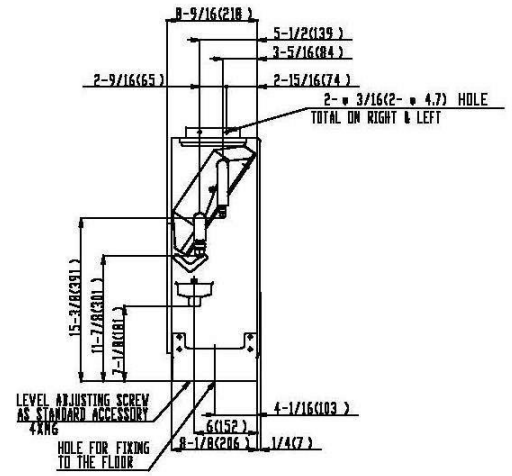
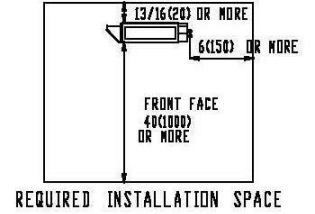
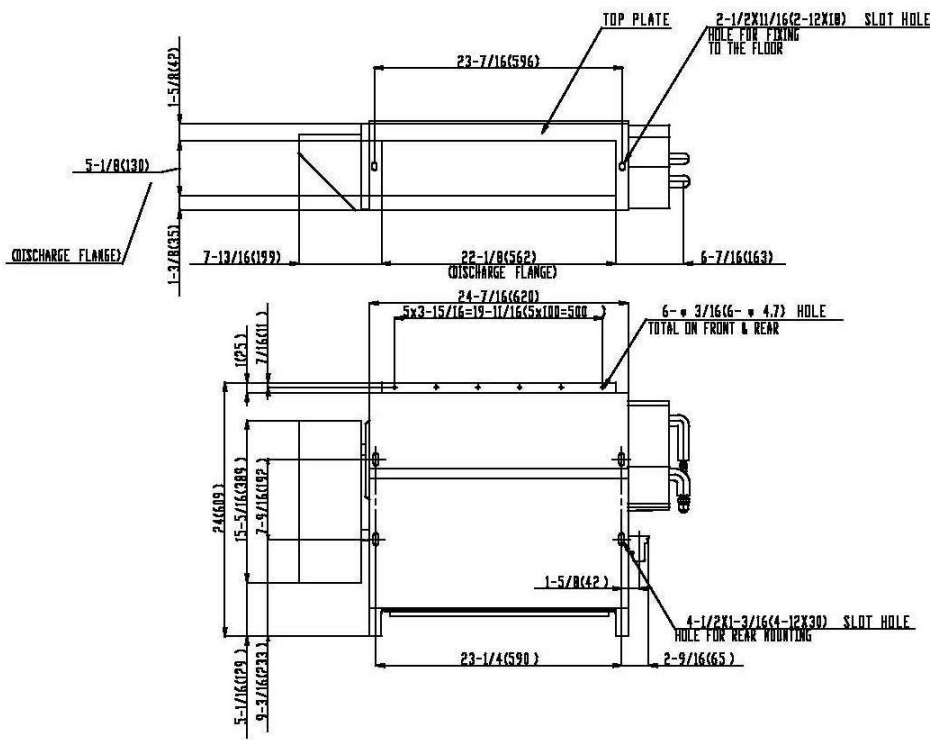
### INDOOR UNIT DETAILS

Power Supply (V/Hz/Ph):	208-230 / 60 / 1	Airflow Rate (H/M) (CFM):	245/210
Power Supply Connections:	L1, L2, Ground	Moisture Removal (Gal/hr):	
Min. Circuit Amps MCA (A):	0.30	Gas Pipe Connection (inch):	1/2
Max Overcurrent Protection (MOP) (A):	15.00	Liquid Pipe Connection (inch):	1/4
Dimensions (HxWxD) (in):	24 x 36-5/8 x 8-5/8	Condensate Connection (inch):	25/32
Panel (HxWxD) (in):		Sound Pressure (H/L) (dBA):	35/32
Net Weight (lb):	47	Sound Power Level (dBA):	
Panel Weight (lb):		Ext. Static Pressure (Rated/Max) (inWg):	0.00 / 0.00

**Submittal Data Sheet**  
 0.75-Ton Concealed Floor Standing Unit  
 FXNQ09MVJU9

**DIMENSIONAL DRAWING**

Unit : in.(mm)





## Submittal Data Sheet

1.0-Ton Concealed Floor Standing Unit

FXNQ12MVJU9

### PERFORMANCE

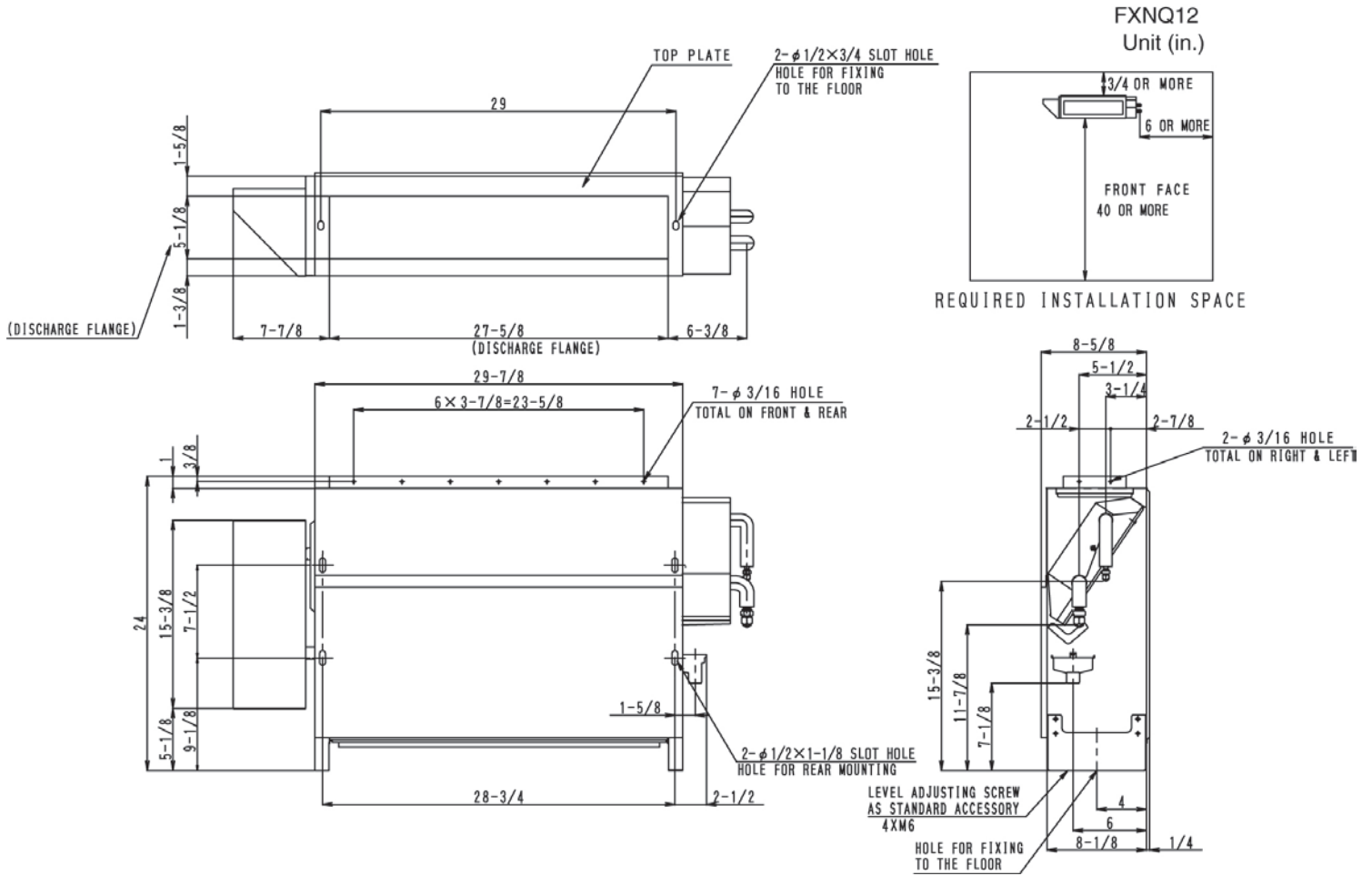
Indoor Unit Model No.	FXNQ12MVJU9	Indoor Unit Name:	1.0-Ton Concealed Floor Standing Unit
Type:	Floor Standing	Rated Cooling Conditions:	Indoor (°F DB/WB): 80 / 67 Ambient (°F DB/WB): 95 / 75
Rated Cooling Capacity (Btu/hr):	12,000	Rated Heating Conditions:	Indoor (°F DB/WB): 70 / 70 Ambient (°F DB/WB): 47 / 43
Sensible Capacity (Btu/hr):	8,300	Rated Piping Length(ft):	
Cooling Input Power (kW):	0.080	Rated Height Separation (ft):	
Rated Heating Capacity (Btu/hr):	13,500		
Heating Input Power (kW):	0.08		

### INDOOR UNIT DETAILS

Power Supply (V/Hz/Ph):	208-230 / 60 / 1	Airflow Rate (H/L) (CFM):	280/210
Power Supply Connections:	L1, L2, Ground	Moisture Removal (Gal/hr):	
Min. Circuit Amps MCA (A):	0.50	Gas Pipe Connection (inch):	1/2
Max Overcurrent Protection (MOP) (A):		Liquid Pipe Connection (inch):	1/4
Dimensions (HxWxD) (in):	24 x 42-1/8 x 8-5/8	Condensate Connection (inch):	53/64
Panel (HxWxD) (in):		Sound Pressure (H/L) (dBA):	36/33
Net Weight (lb):	51	Sound Power Level (dBA):	
Panel Weight (lb):		Ext. Static Pressure (Rated/Max) (inWg):	0.00 / 0.00

**Submittal Data Sheet**  
 1.0-Ton Concealed Floor Standing Unit  
 FXNQ12MVJU9

**DIMENSIONAL DRAWING**







## Submittal Data Sheet

1.5-Ton Concealed Floor Standing Unit

FXNQ18MVJU9

### PERFORMANCE

Indoor Unit Model No.	FXNQ18MVJU9	Indoor Unit Name:	1.5-Ton Concealed Floor Standing Unit
Type:	Floor Standing	Rated Cooling Conditions:	Indoor (°F DB/WB): 80 / 67 Ambient (°F DB/WB): 95 / 75
Rated Cooling Capacity (Btu/hr):	18,000	Rated Heating Conditions:	Indoor (°F DB/WB): 70 / 70 Ambient (°F DB/WB): 47 / 43
Sensible Capacity (Btu/hr):	12,200	Rated Piping Length(ft):	
Cooling Input Power (kW):	0.110	Rated Height Separation (ft):	
Rated Heating Capacity (Btu/hr):	20,000		
Heating Input Power (kW):	0.11		

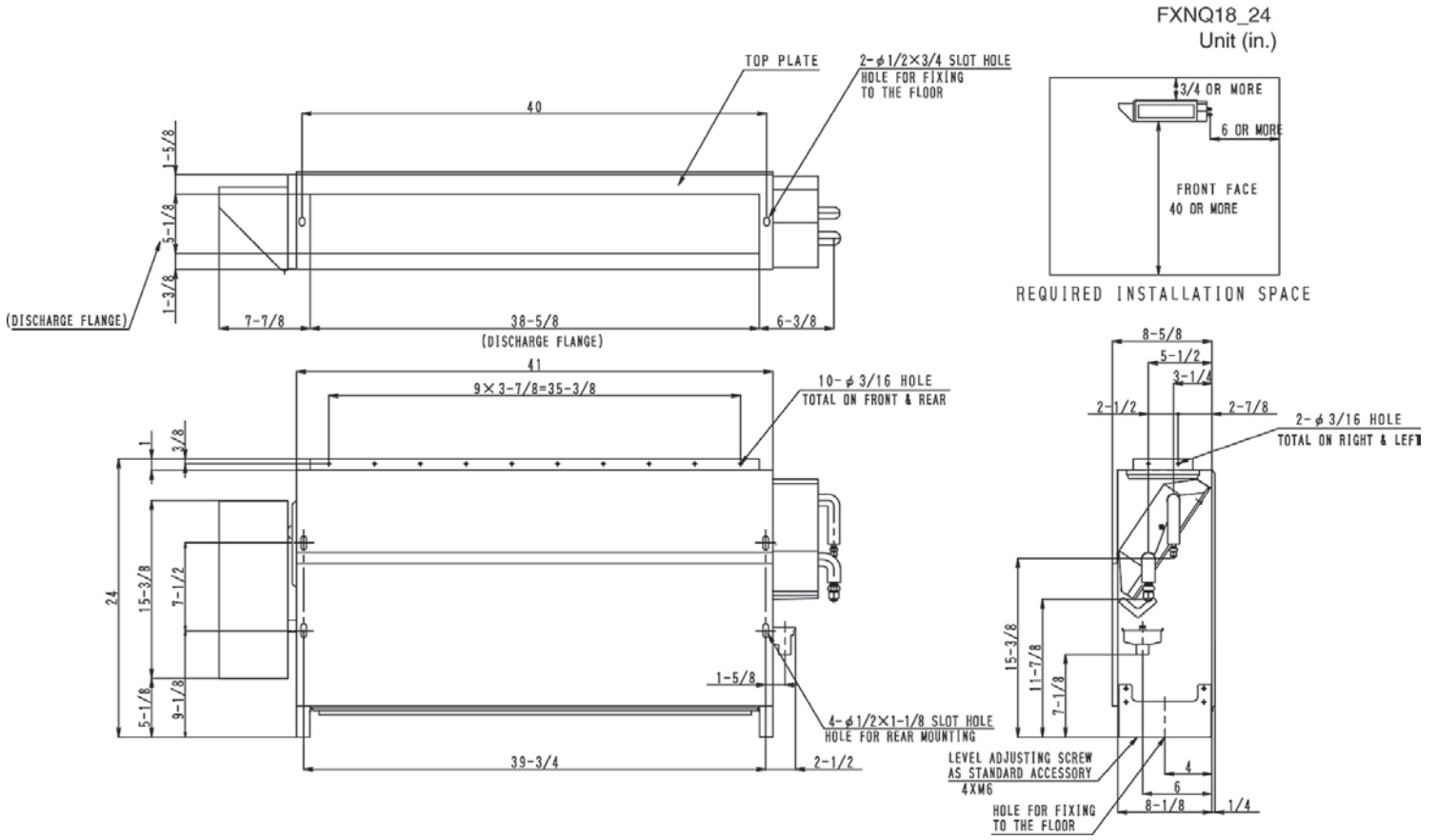
### INDOOR UNIT DETAILS

Power Supply (V/Hz/Ph):	208-230 / 60 / 1	Airflow Rate (H/L) (CFM):	490/380
Power Supply Connections:	L1, L2, Ground	Moisture Removal (Gal/hr):	
Min. Circuit Amps MCA (A):	0.60	Gas Pipe Connection (inch):	1/2
Max Overcurrent Protection (MOP) (A):		Liquid Pipe Connection (inch):	1/4
Dimensions (HxWxD) (in):	24 x 53-1/8 x 8-5/8	Condensate Connection (inch):	53/64
Panel (HxWxD) (in):		Sound Pressure (H/L) (dBA):	40/35
Net Weight (lb):	60	Sound Power Level (dBA):	
Panel Weight (lb):		Ext. Static Pressure (Rated/Max) (inWg):	0.00 / 0.00



**Submittal Data Sheet**  
1.5-Ton Concealed Floor Standing Unit  
FXNQ18MVJU9

**DIMENSIONAL DRAWING**





## Submittal Data Sheet

2.0-Ton Concealed Floor Standing Unit

FXNQ24MVJU9

### PERFORMANCE

Indoor Unit Model No.	FXNQ24MVJU9	Indoor Unit Name:	2.0-Ton Concealed Floor Standing Unit
Type:	Floor Standing	Rated Cooling Conditions:	Indoor (°F DB/WB): 80 / 67 Ambient (°F DB/WB): 95 / 75
Rated Cooling Capacity (Btu/hr):	24,000	Rated Heating Conditions:	Indoor (°F DB/WB): 70 / 70 Ambient (°F DB/WB): 47 / 43
Sensible Capacity (Btu/hr):	15,900	Rated Piping Length(ft):	
Cooling Input Power (kW):	0.110	Rated Height Separation (ft):	
Rated Heating Capacity (Btu/hr):	27,000		
Heating Input Power (kW):	0.11		

### INDOOR UNIT DETAILS

Power Supply (V/Hz/Ph):	208-230 / 60 / 1	Airflow Rate (H/L) (CFM):	560/420
Power Supply Connections:	L1, L2, Ground	Moisture Removal (Gal/hr):	
Min. Circuit Amps MCA (A):	0.60	Gas Pipe Connection (inch):	5/8
Max Overcurrent Protection (MOP) (A):		Liquid Pipe Connection (inch):	3/8
Dimensions (HxWxD) (in):	24 x 53-1/8 x 8-5/8	Condensate Connection (inch):	53/64
Panel (HxWxD) (in):		Sound Pressure (H/L) (dBA):	41/36
Net Weight (lb):	60	Sound Power Level (dBA):	
Panel Weight (lb):		Ext. Static Pressure (Rated/Max) (inWg):	0.00 / 0.00

**Submittal Data Sheet**  
 2.0-Ton Concealed Floor Standing Unit  
 FXNQ24MVJU9

**DIMENSIONAL DRAWING**

