



## Submittal Data Sheet

0.75-Ton Wall Mounted Unit Cooling Only - FTK09NMVJURK09NMVJU

Project: Yanmar Wall Mount

Submitted by: Alexandra Edinger of DAIKIN APPLIED GEORGIA on 10/4/2017

Submitted to: No Engineer Name Specified

Tags: 0.75-Ton Wall Mounted Unit Cooling Only

## FEATURES

- IR controller included
- Titanium apatite photocatalytic air purification filter (option)
- Hot start technology
- Auto-restart (after power failure)

## BENEFITS

- Quiet operation
- Low ambient cooling operation down to -4° F with field setting and wind baffle (KPW937E4)
- Operating Range - Cooling (50° - 114.8°)
- 12 year limited parts and compressor warranty with online registration
- 5 Year limited parts warranty for commercial applications

## INDOOR UNIT



## OUTDOOR UNIT



## NOTES

- Requires Adaptor KRP067A41E for use with a wired controller.



## Submittal Data Sheet

0.75-Ton Wall Mounted Unit Cooling Only - FTK09NMVJURK09NMVJU

Project: Yanmar Wall Mount

Submitted by: Alexandra Edinger of DAIKIN APPLIED GEORGIA on 10/4/2017

Submitted to: No Engineer Name Specified

Tags: 0.75-Ton Wall Mounted Unit Cooling Only

### SYSTEM PERFORMANCE

|                                    |                |                               |   |
|------------------------------------|----------------|-------------------------------|---|
| Indoor Unit Model No.              | FTK09NMVJU     | Indoor Unit Name:             | 19 seer ac ductless id 3/4 ton                            |
| Outdoor Unit Model No.             | RK09NMVJU      | Outdoor Unit Name:            | 19 SEER, AC, Ductless ODU, 3/4 Ton                        |
| Rated Cooling Capacity (Btu/hr):   | 9,000          | Rated Cooling Conditions:     | Indoor (°F DB/WB): 80 / 67<br>Ambient (°F DB/WB): 95 / 75 |
| Sensible Capacity (Btu/hr):        | 8,170          | Rated Piping Length(ft):      | 25  |
| Max/Min Cooling Capacity (Btu/hr): | 10,200 / 4,400 | Rated Height Difference (ft): | 0.00  |
| Cooling Input Power (kW):          | 0.720          |                               |   |
| SEER (Non-Ducted/Ducted):          | 19.00 /        |                               |   |
| EER (Non-Ducted/Ducted):           | 12.50 /        |                               |   |

### SYSTEM DETAILS

|  |        |                                   |          |
|--|--------|-----------------------------------|----------|
| Refrigerant Type:                      | R-410A | Cooling Operation Range (°F DB):  | 50 - 115 |
| Holding Refrigerant Charge (lbs):      | 1.54   | Heating Operation Range (°F WB):  | -        |
| Additional Charge (lb/ft):             | 0.21   | Max. Pipe Length (Vertical) (ft): | 49       |
| Pre-charge Piping (Length) (ft):       | 33     | Cooling Range w/Baffle (°F DB):   | -4 - 115 |
| Max. Pipe Length (Total) (ft):         | 66     | Heating Range w/Baffle (°F WB):   | -        |
| Max Height Separation (Ind to Ind ft): | 0      |                                   |          |

## Submittal Data Sheet

0.75-Ton Wall Mounted Unit Cooling Only - FTK09NMVJURK09NMVJU

Project: Yanmar Wall Mount

Submitted by: Alexandra Edinger of DAIKIN APPLIED GEORGIA on 10/4/2017

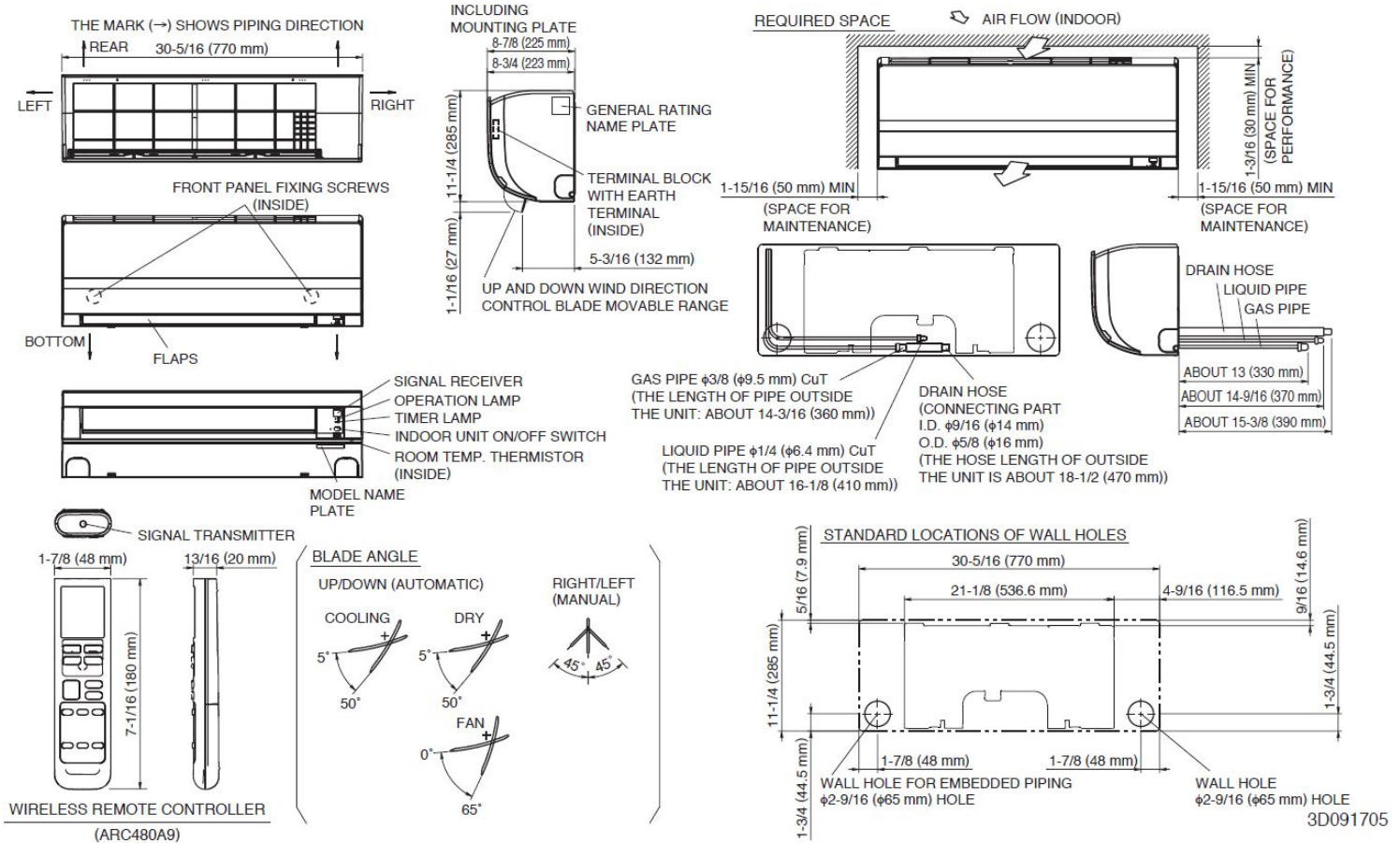
Submitted to: No Engineer Name Specified

Tags: 0.75-Ton Wall Mounted Unit Cooling Only

### INDOOR UNIT DETAILS

|  |                                       |                                  |                 |
|--|---------------------------------------|----------------------------------|-----------------|
| Power Supply (V/Hz/Ph):                  | 208-230 / 60 / 1                      | Airflow Rate (H/M/L/SL) (CFM):   | 417/297/244/141 |
| Power Supply Connections:                | See Outdoor Unit for Electrical Specs | Moisture Removal (Gal/hr):       | 0.3             |
| Min. Circuit Amps MCA (A):               |                                       | Gas Pipe Connection (inch):      | 3/8             |
| Max Overcurrent Protection (MOP) (A):    |                                       | Liquid Pipe Connection (inch):   | 1/4             |
| Dimensions (HxWxD) (in):                 | 11-1/4 x 30-5/16 x 8-3/4              | Condensate Connection (inch):    | 5/8             |
| Net Weight (lb):                         | 18                                    | Sound Pressure (H/M/L/SL) (dBA): | 43/36/30/19     |
| Ext. Static Pressure (Rated/Max) (inWg): | /                                     | Sound Power Level (dBA):         |                 |

## DIMENSIONAL DRAWING - INDOOR UNIT



## Submittal Data Sheet

0.75-Ton Wall Mounted Unit Cooling Only - FTK09NMVJURK09NMVJU

Project: Yanmar Wall Mount

Submitted by: Alexandra Edinger of DAIKIN APPLIED GEORGIA on 10/4/2017

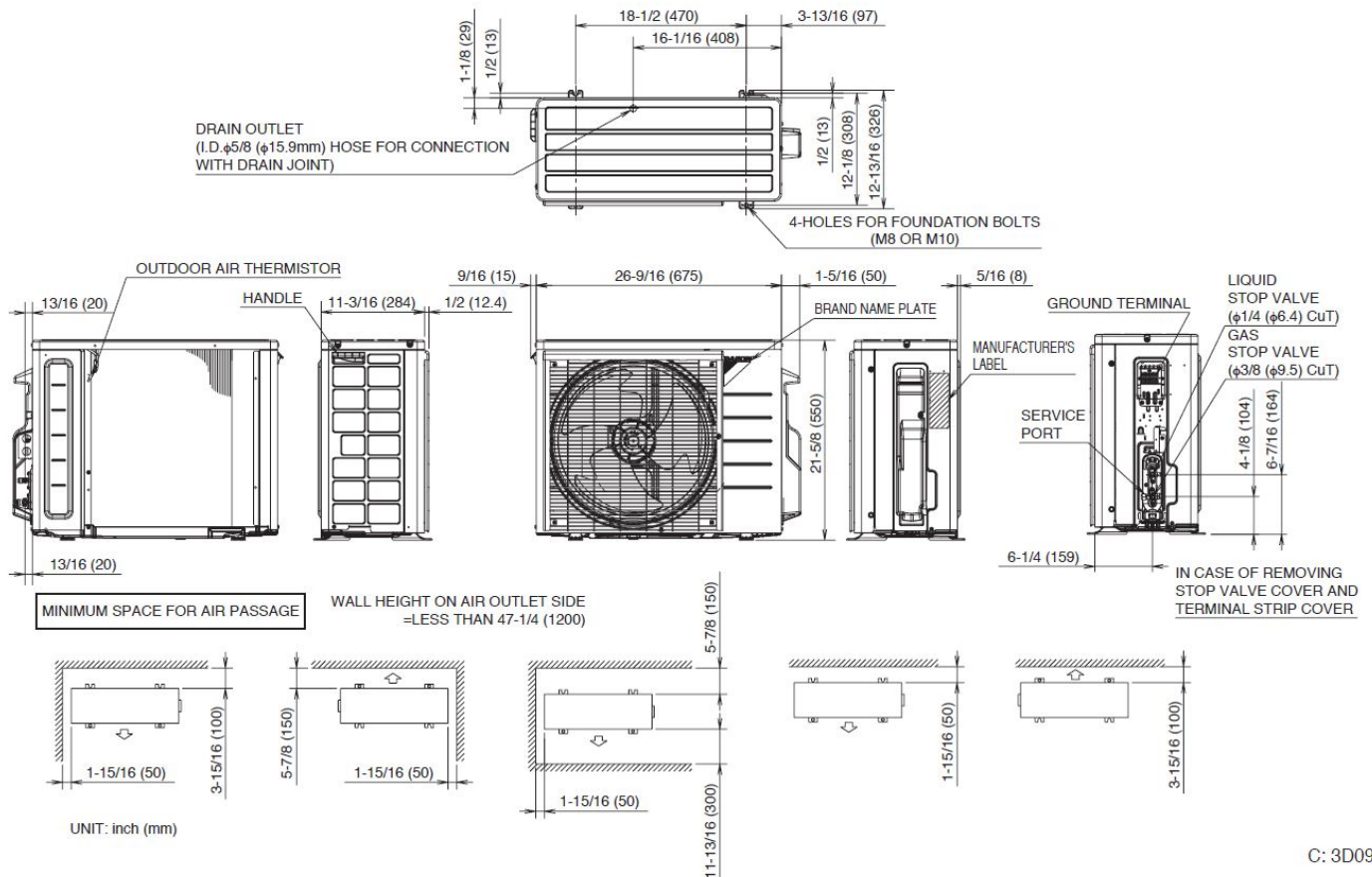
Submitted to: No Engineer Name Specified

Tags: 0.75-Ton Wall Mounted Unit Cooling Only

### OUTDOOR UNIT DETAILS

|                                       |                            |                                |      |
|---------------------------------------|----------------------------|--------------------------------|------|
| Power Supply (V/Hz/Ph):               | 208-230 / 60 / 1           | Compressor Stage:              |      |
| Power Supply Connections:             | L1, L2, Ground             | Capacity Control Range (%):    | -    |
| Min. Circuit Amps MCA (A):            | 12.1                       | Airflow Rate (H) (CFM):        | 1102 |
| Max Overcurrent Protection (MOP) (A): |                            | Gas Pipe Connection (inch):    | 3/8  |
| Max Starting Current MSC(A):          |                            | Liquid Pipe Connection (inch): | 1/4  |
| Rated Load Amps RLA(A):               |                            | Sound Pressure (H) (dBA):      | 46   |
| Dimensions (HxWxD) (in):              | 21-5/8 x 26-9/16 x 11-3/16 | Sound Power Level (dBA):       |      |
| Net Weight (lb):                      | 55                         |                                |      |

### DIMENSIONAL DRAWING - OUTDOOR UNIT



C: 3D092206