

CP35D2



MODEL				CP35D2-TNUG	CP35D2Z-TNUG	CP35D2-TNUW	CP35D2Z-TNUW
POWER OUTPUT	Rated Output		kW	35.0 *2 *3	35.0 *2 *3	35.0 *2 *3	35.0 *2 *3
			kVA	-	35.0 *2 *3	-	35.0 *2 *3
	Voltage, Frequency		V , Hz	AC 208 , 60		AC 208 , 60	
	Phase & Wire		-	3 phase , 3 wire		3 phase , 3 wire	
	Power Factor		%	0.97 to 1.00		0.97 to 1.00	
FUEL	Gas Type		-	Natural gas		Natural gas	
	Pressure	Standard	in.WC (kPA)	8.03 (2.0)		8.03 (2.0)	
		Working Range	in.WC (kPA)	8.0 - 10.0 (2.0 - 2.5)		8.0 - 10.0 (2.0 - 2.5)	
	Consumption (LHV)		kBTU/hr (kW)	367.6 (107.7)		367.6 (107.7)	
HEAT OUTPUT (HEAT RECOVERY)	Rated Recovered Heat		kBTU/hr (kW)	194.2 (56.9)		194.2 (56.9)	
	Rated Temp	Inlet	F (C)	167.0 (75.0)		167.0 (75.0)	
		Outlet	F (C)	176.0 (80.0) Max: 190.4 (88.0)		176.0 (80.0) Max: 190.4 (88.0)	
	Rated Hot Water Flow		gal / min (L / min)	46.5 (176) when outlet temp 176F (80C)		46.5 (176) when outlet temp 176F (80C)	
INPUT POWER SUPPLY	Input Voltage		V	AC208		AC208	
	Staring Current		A	46 (Average Current)		46 (Average Current)	
	Rated Power Consumption	Radiator Fan Stop	kW	0.50	0.54	0.76	0.80
		Radiator Fan Run	kW	0.76	0.80	-	
GROSS EFFICIENCY *1	Overall Efficiency (LHV)		%	88.0		88.0	
	Generating Efficiency (LHV)		%	32.5		32.5	
	Exhaust Heat Recovery Rate (LHV)		%	55.5		55.5	
OPERATION NOISE	Radiator Fan Stop		dB(A)	63		63	
	Radiator Fan Run		dB(A)	65		-	
DIMENSIONS	Width		in (mm)	78.74 (2000)		78.74 (2000)	
	Depth		in (mm)	31.50 (800) Including the width of the leg 35.43 (900)		31.50 (800) Including the width of the leg 35.43 (900)	
	Height		in (mm)	81.30 (2065)		81.30 (2065)	
	Weight - Including Cooling Water & Lubricant		lb (kg)	3064 (1390)	3086 (1400)	3064 (1390)	3086 (1400)
MAINTENANCE INTERVAL			Hours	7500		7500	
Standard Warranty				2 Years; 15,000 Hours*		2 Years; 15,000 Hours*	
YES Product Protection				10 Years; 30,000 Hours*		10 Years; 30,000 Hours*	
				10 years; 50,000 Hours*		10 years; 50,000 Hours*	
Emissions & Certifications	EPA Certified UL2200 Certified CSAC22.2 No 14 Certified CSAC22.2 No 100 Certified UL1741/IEEE1547 Certified						

*1 The minimum modulation amount is dependent on the CT and Transducer specifications

*2 Natural gas calculations for fuel consumption are based on converting LHV to HHV: LHV=983 BTU/scf,HHV= 1,089 BTU/scf

*3 Transformer necessary for 120V AC power requirements.

* Whichever comes first

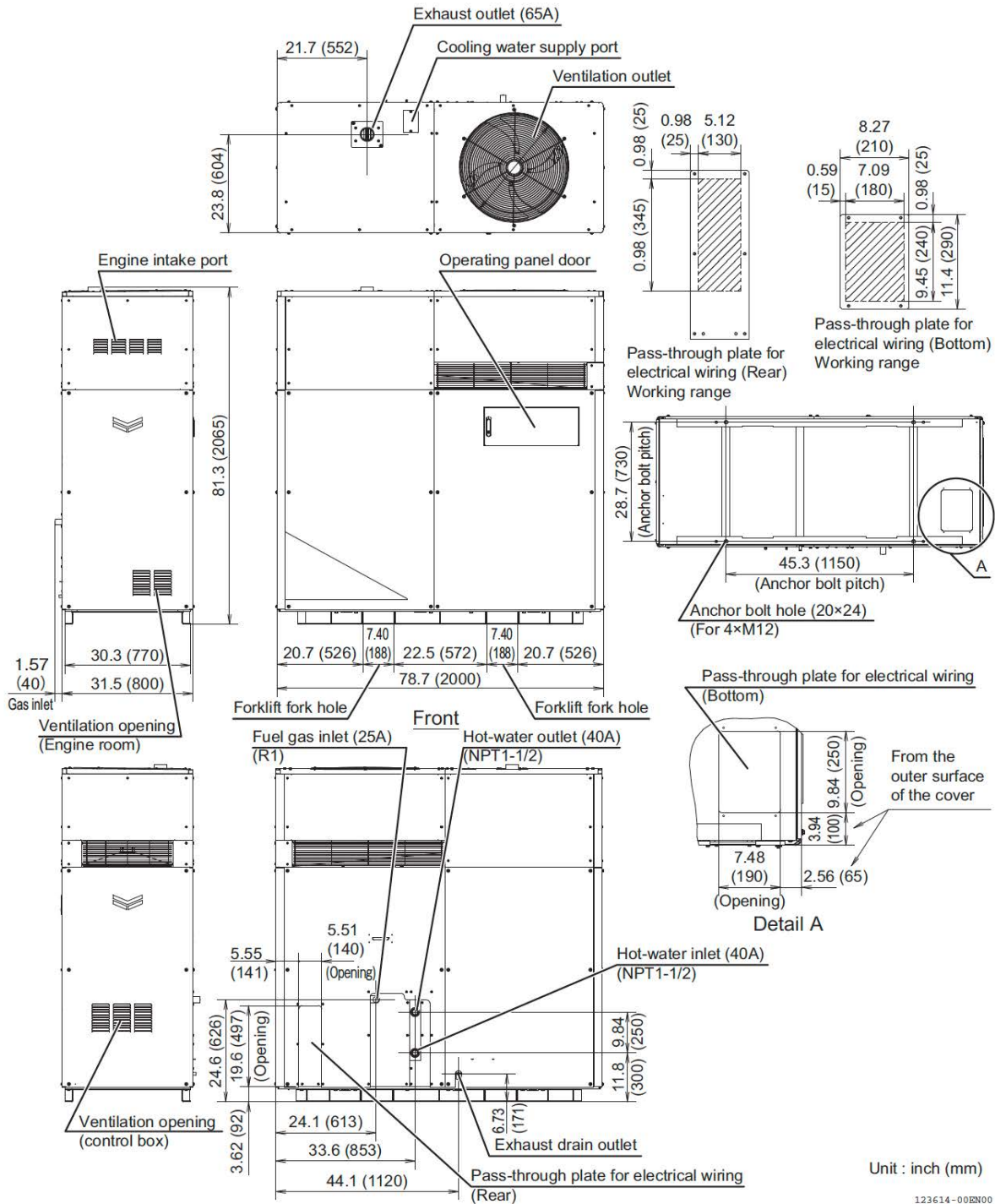
NOTE: Due to YANMAR's ongoing commitment to quality, specifications, ratings and dimensions subject to change without notice. Improper installation, adjustment, alteration, service or maintenance can cause property damage or personal injury. Installation and service must be in accordance with current specifications, ratings and dimensions and be performed by a qualified installer and servicing agency.

YANMAR ENERGY SYSTEMS 2025
yanmarenergysystems.com

CP35D2



[Standard specification]
• CP35D2-TNUG, CP35D2Z-TNUG

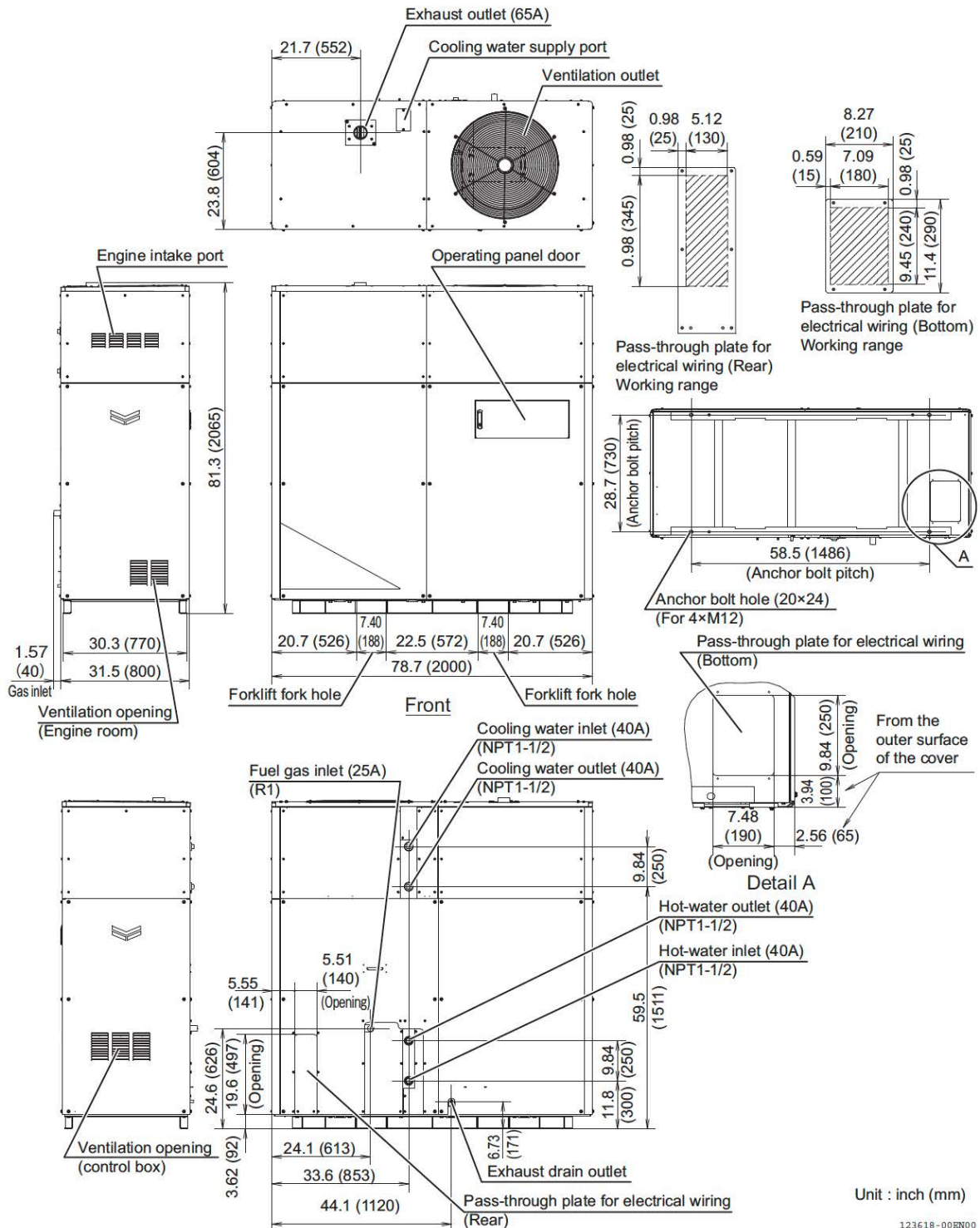


NOTE: Due to YANMAR's ongoing commitment to quality, specifications, ratings and dimensions subject to change without notice. Improper installation, adjustment, alteration, service or maintenance can cause property damage or personal injury. Installation and service must be in accordance with current specifications, ratings and dimensions and be performed by a qualified installer and servicing agency.

CP35D2



- [Radiator less specification]
• CP35D2-TNUW, CP35D2Z-TNUW



NOTE: Due to YANMAR's ongoing commitment to quality, specifications, ratings and dimensions subject to change without notice. Improper installation, adjustment, alteration, service or maintenance can cause property damage or personal injury. Installation and service must be in accordance with current specifications, ratings and dimensions and be performed by a qualified installer and servicing agency.