



Submittal Data Sheet

Sensor Kit
BRE49B1F

DESCRIPTION

The sensor kit is an optional accessory that attaches to the 4-way blow ceiling suspended unit's decoration panel and senses occupancy and the floor temperature.

FEATURES

- The floor sensor automatically adjusts the indoor unit's individual louver positions to ensure even temperature distribution in the space.
- The presence sensor configurable automatic setback will adjust the indoor unit cooling and heating set points when the spaces is determines to be unoccupied
- The presence sensor's automatic OFF functionality can turn the indoor unit off after the room is determined to be unoccupied for a specific period of time.



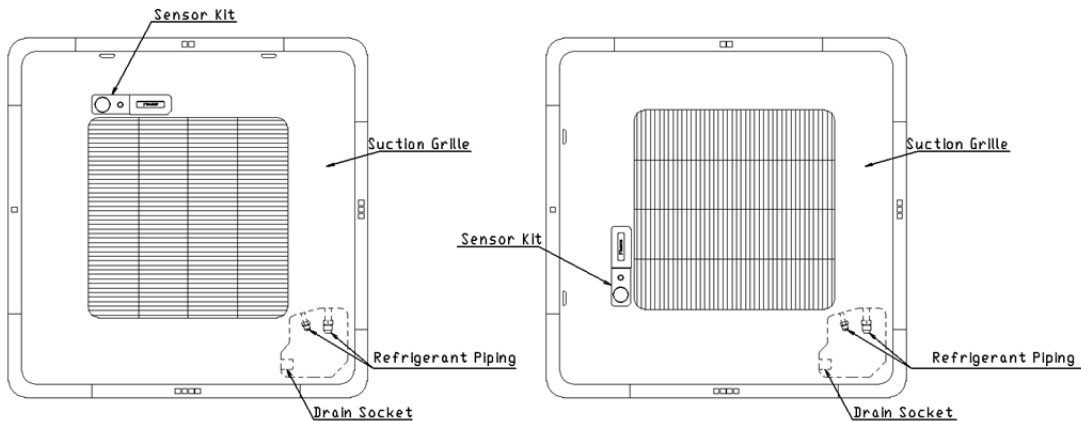
SPECIFICATIONS

Model No.:	BRE49B1F
Components Included:	Sensor assembly, sensor cover, clamp material, branded name plate, wire harnesses, screws and installation manual
Unit Compatibility:	FXUQ18PVJU, FXUQ24PVJU, FXUQ30PVJU, FXUQ36PVJU
Unit Weight:	0.6 lbs (0.3 kgs)
Dimensions (W x H x D) :	Sensor: 2" x 5" x 1-3/4" (51mm x 127mm x 44.5mm) Sensor with branded name plate: 2" x 8" x ~1/8" (51mm x 203.2mm x 3mm)
Material / Finish:	Plastic sensor and branded name plate / White
Power Supply:	N/A

Notes:

- 1) Sensor functionality requires the BRC1E73 for setting configurations.
- 2) The KRCS01-4B remote sensor accessory cannot be installed when the BRE49B1F is installed,

TYPICAL INSTALLATION DRAWINGS



Daikin North America LLC, 5151 San Felipe, Suite 500, Houston TX, 77056
www.daikinac.com www.daikincomfort.com

(Daikin's products are subject to continuous improvements. Daikin reserves the right to modify product design, specifications and information in this data sheet without notice and without incurring any obligations).