



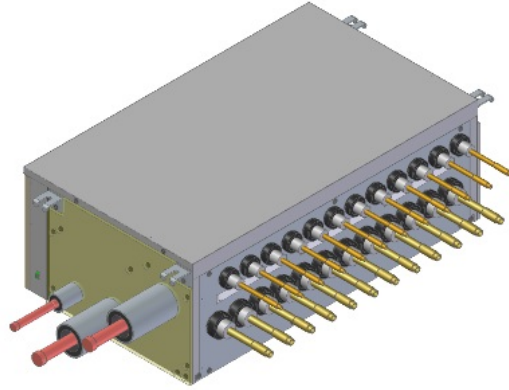
## Submittal Data Sheet

Branch Selector Box (12-Port)

BS12Q54TVJ

### FEATURES

- Individual control and changeover with extended range of product offerings - 4, 6, 8, 10 and 12 port options.
- Up to 54 MBH capacity per port.
- Lower sound levels thanks to simplified mechanical design, when compared to VRV III models.
- Ultimate design flexibility - single and multi-port units can be combined in one system.
- Quick installation due to fewer brazing points and less wiring.
- Unlimited number of unused ports per box or system.
- Low built-in height.
- No drain piping needed.
- Standard Limited Warranty: 10-year warranty on all parts.





## Submittal Data Sheet

Branch Selector Box (12-Port)

BS12Q54TVJ

### PERFORMANCE

Indoor Unit Model No.	BS12Q54TVJ	Indoor Unit Name:	Branch Selector Box (12-Port)
-----------------------	------------	-------------------	-------------------------------

Type:		Rated Cooling Conditions:	Indoor (°F DB/WB): / Ambient (°F DB/WB): /
-------	--	---------------------------	---

Rated Cooling Capacity (Btu/hr):	290,000	Rated Heating Conditions:	Indoor (°F DB/WB): / Ambient (°F DB/WB): /
----------------------------------	---------	---------------------------	---

Sensible Capacity (Btu/hr):		Rated Piping Length(ft):	
-----------------------------	--	--------------------------	--

Cooling Input Power (kW):	0.130	Rated Height Separation (ft):	
---------------------------	-------	-------------------------------	--

### INDOOR UNIT DETAILS

Power Supply (V/Hz/Ph):	208-230 / 60 / 1	Airflow Rate (H) (CFM):	
-------------------------	------------------	-------------------------	--

Power Supply Connections:		Moisture Removal (Gal/hr):	
---------------------------	--	----------------------------	--

Min. Circuit Amps MCA (A):	1.20	Gas Pipe Connection (inch):	1-1/8
----------------------------	------	-----------------------------	-------

Max Overcurrent Protection (MOP) (A):	15.00	Liquid Pipe Connection (inch):	5/8
---------------------------------------	-------	--------------------------------	-----

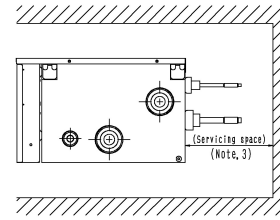
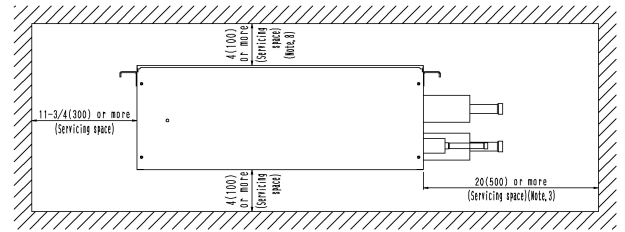
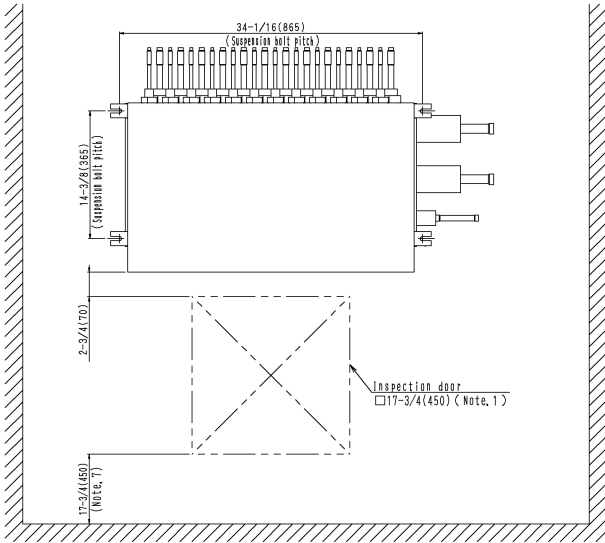
Dimensions (HxWxD) (in):	11-3/4 x 32-5/16 x 18-15/16	Condensate Connection (inch):	
--------------------------	-----------------------------	-------------------------------	--

Net Weight (lb):	106	Sound Pressure ( ) (dBA):	
------------------	-----	---------------------------	--

Ext. Static Pressure (Rated/Max) (inWg):	/	Sound Power Level (dBA):	
--	---	--------------------------	--

**Submittal Data Sheet**  
 Branch Selector Box (12-Port)  
 BS12Q54TVJ

**DIMENSIONAL DRAWING**



Servicing space

