



**Submittal Data Sheet**  
1.0-Ton Round Flow Sensing Cassette  
FXFQ12TVJU

PERFORMANCE			
Indoor Unit Model No.	FXFQ12TVJU	Indoor Unit Name:	1.0-Ton Round Flow Sensing Cassette
Type:	Cassette	Rated Cooling Conditions:	Indoor (°F DB/WB): 80 / 67 Ambient (°F DB/WB): 95 / 75
Rated Cooling Capacity (Btu/hr):	12,000	Rated Heating Conditions:	Indoor (°F DB/WB): 70 / 60 Ambient (°F DB/WB): 47 / 43
Sensible Capacity (Btu/hr):	9,700	Rated Piping Length(ft):	
Cooling Input Power (kW):	0.030	Rated Height Separation (ft):	
Rated Heating Capacity (Btu/hr):	13,500		
Heating Input Power (kW):	0.03		

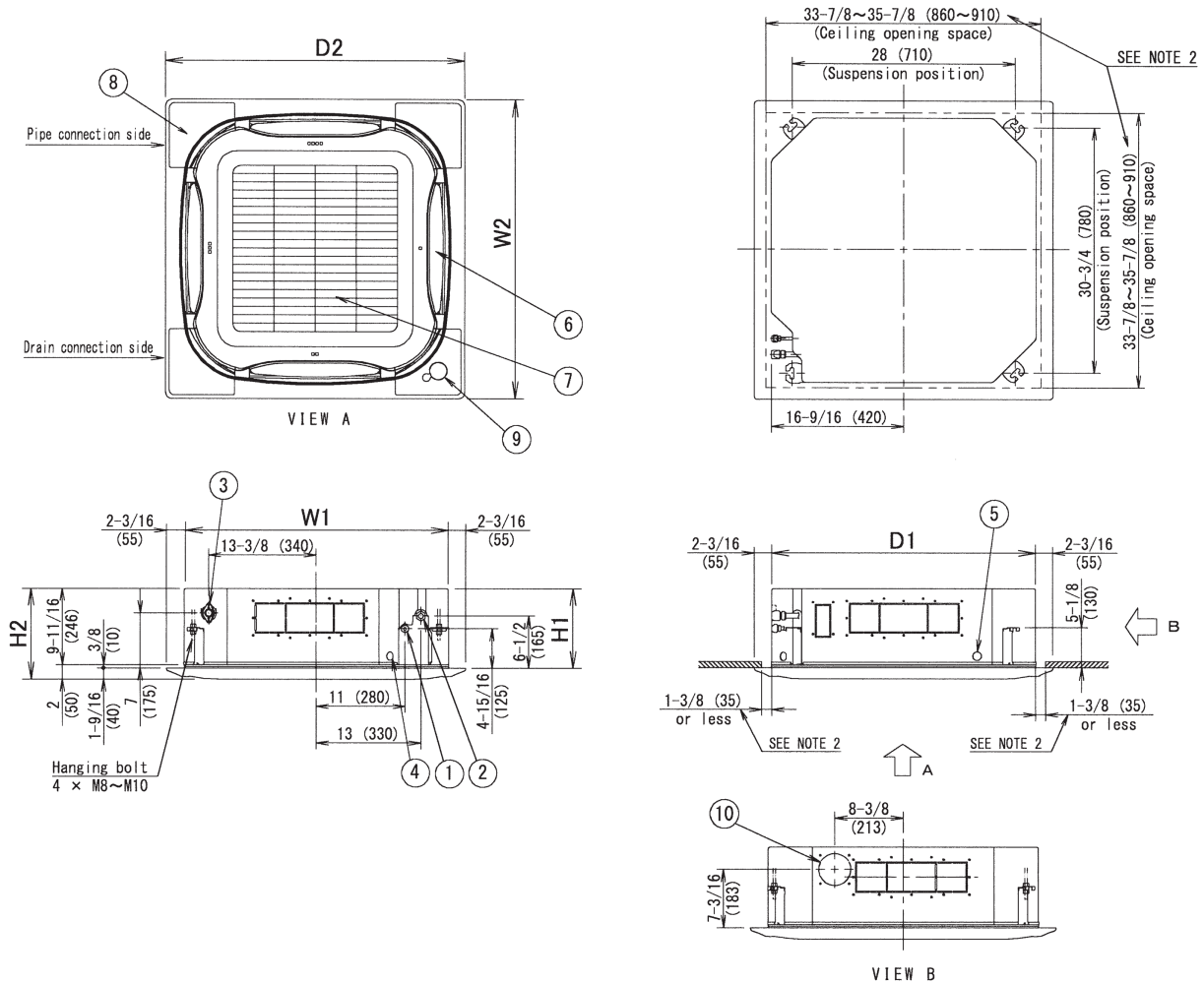
INDOOR UNIT DETAILS			
Power Supply (V/Hz/Ph):	208-230 / 60 / 1	Airflow Rate (HH/H/L) (CFM):	441/406/353
Power Supply Connections:	L1, L2, Ground	Moisture Removal (Gal/hr):	
Min. Circuit Amps MCA (A):	0.3	Gas Pipe Connection (inch):	1/2
Max Overcurrent Protection (MOP) (A):	15	Liquid Pipe Connection (inch):	1/4
Dimensions (HxWxD) (in):	9-11/16 x 33-1/16 x 33-1/16	Condensate Connection (inch):	1-1/4
Net Weight (lb):	42	Sound Pressure (H/L) (dBA):	29/27
Ext. Static Pressure (Rated/Max) (inWg):	/	Sound Power Level (dBA):	

## Submittal Data Sheet

1.0-Ton Round Flow Sensing Cassette

FXFQ12TVJU

## DIMENSIONAL DRAWING



ITEM	PART NAME	REMARK
1	Liquid pipe connection	$\phi 3/8$ ( $\phi 9.5$ ) Flare connection
2	Gas pipe connection	$\phi 5/8$ ( $\phi 15.9$ ) Flare connection
3	Drain pipe connection	VP25 (O.D. $\phi 1-1/4$ ( $\phi 32$ ), I.D. $\phi 1$ ( $\phi 25$ ))
4	Power supply entry hole	
5	Transmission wiring entry hole	
6	Air Outlet	
7	Air Inlet grille	
8	Corner decoration cover	
9	Sensor	Infrared presence sensor Infrared floor sensor
10	Knock out hole	$\phi 3-15/16$ ( $\phi 100$ )

Without panel	H1	10 (256)
	W1	33-1/16 (840)
	D1	33-1/16 (840)
With panel	H2	11-11/16 (296)
	W2	37-3/8 (950)
	D2	37-3/8 (950)

Notes) 1. Location of the nameplates:

- Unit body: on the control box cover.
- Decoration panel: on the panel frame at the motor side under the corner cover.

2. Make sure the spacing between the ceiling and the cassette is no more than 1-3/8" (35mm).  
MAX ceiling opening: 35-7/8" (910mm).

3. When the conditions exceed 86°F (30°C) and RH 80% in the ceiling or fresh air is inducted into the ceiling an additional insulation is required (polyethylene foam, thickness 3/8" (10mm) or more).

Note: For additional dimensional data and clearance information, refer to Engineering Data