



**Submittal Data Sheet**  
2.0-Ton Round Flow Sensing Cassette  
FXFQ24TVJU

**PERFORMANCE**

Indoor Unit Model No.	FXFQ24TVJU	Indoor Unit Name:	2.0-Ton Round Flow Sensing Cassette
Type:	Ceiling Cassette	Rated Cooling Conditions:	Indoor (°F DB/WB): 80 / 67 Ambient (°F DB/WB): 95 / 75
Rated Cooling Capacity (Btu/hr):	24,000	Rated Heating Conditions:	Indoor (°F DB/WB): 70 / 70 Ambient (°F DB/WB): 47 / 43
Sensible Capacity (Btu/hr):	20,000	Rated Piping Length(ft):	
Cooling Input Power (kW):	0.080	Rated Height Separation (ft):	
Rated Heating Capacity (Btu/hr):	27,000		
Heating Input Power (kW):	0.08		

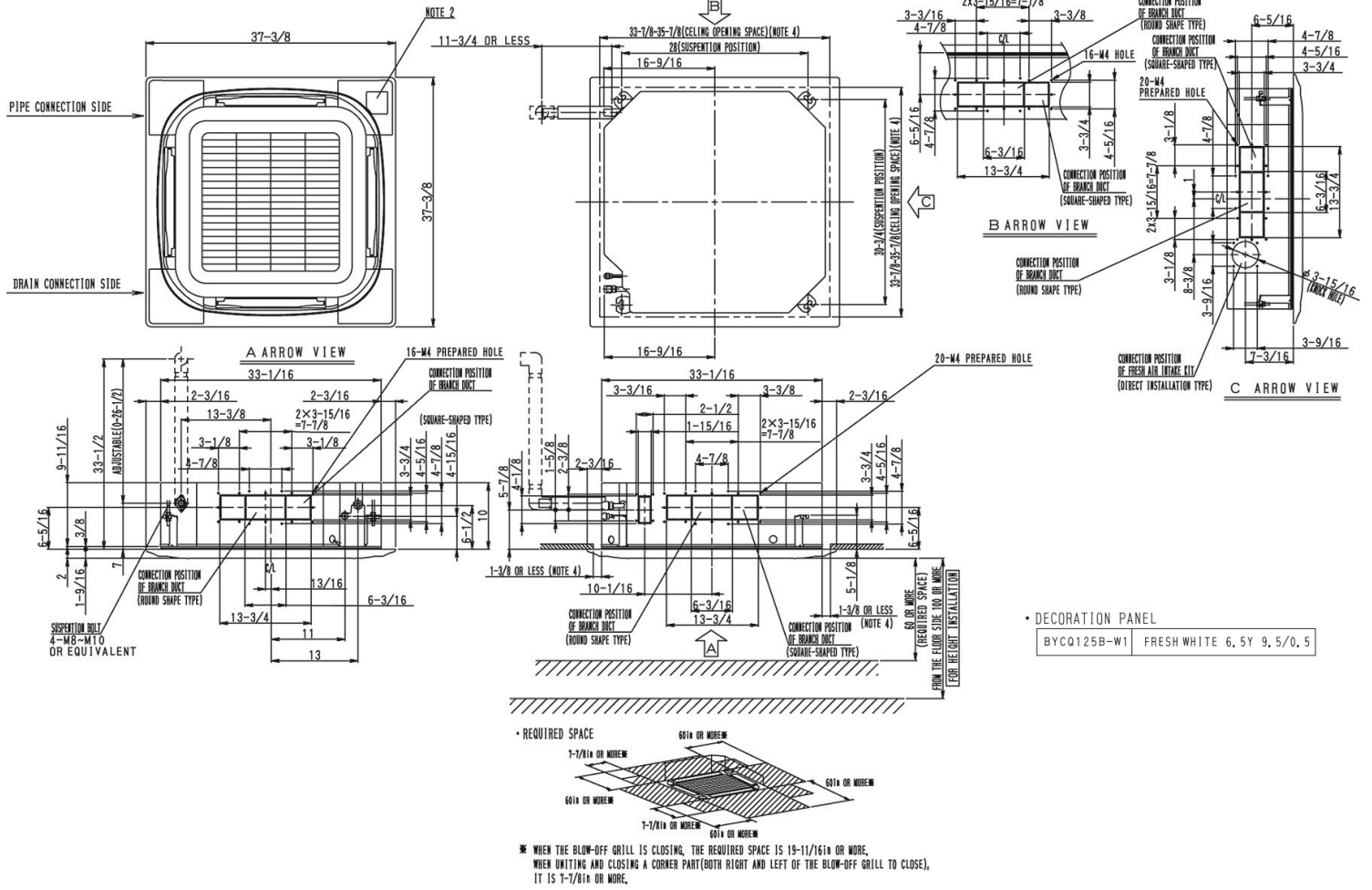
**INDOOR UNIT DETAILS**

Power Supply (V/Hz/Ph):	208-230 / 60 / 1	Airflow Rate (H/M/L) (CFM):	777/618/477
Power Supply Connections:	L1, L2, Ground	Moisture Removal (Gal/hr):	
Min. Circuit Amps MCA (A):	0.70	Gas Pipe Connection (inch):	5/8
Max Overcurrent Protection (MOP) (A):		Liquid Pipe Connection (inch):	3/8
Dimensions (HxWxD) (in):	9-11/16 x 33-1/16 x 33-1/16	Condensate Connection (inch):	1-1/4
Panel (HxWxD) (in):	2 x 37-3/8 x 37-3/8	Sound Pressure (H/L) (dBA):	32/28
Net Weight (lb):	51	Sound Power Level (dBA):	
Panel Weight (lb):	22	Ext. Static Pressure (Rated/Max) (inWg):	0.00 / 0.00

**Submittal Data Sheet**  
 2.0-Ton Round Flow Sensing Cassette  
 FXFQ24TVJU

**DIMENSIONAL DRAWING**

**FXFQ07-24TVJU**  
 Unit (inches)



• DECORATION PANEL

BYCQ125B-W1	FRESH WHITE 6, 5Y 9, 5/0, 5
-------------	-----------------------------