



Submittal Data Sheet
2.5-Ton Round Flow Sensing Cassette
FXFQ30TVJU

| PERFORMANCE | | | |
|----------------------------------|------------|-------------------------------|---|
| Indoor Unit Model No. | FXFQ30TVJU | Indoor Unit Name: | 2.5-Ton Round Flow Sensing Cassette |
| Type: | Cassette | Rated Cooling Conditions: | Indoor (°F DB/WB): 80 / 67 Ambient (°F DB/WB): 95 / 75 |
| Rated Cooling Capacity (Btu/hr): | 30,000 | Rated Heating Conditions: | Indoor (°F DB/WB): 70 / 60 Ambient (°F DB/WB): 47 / 43 |
| Sensible Capacity (Btu/hr): | 22,300 | Rated Piping Length(ft): | |
| Cooling Input Power (kW): | 0.170 | Rated Height Separation (ft): | |
| Rated Heating Capacity (Btu/hr): | 34,000 | | |
| Heating Input Power (kW): | 0.16 | | |

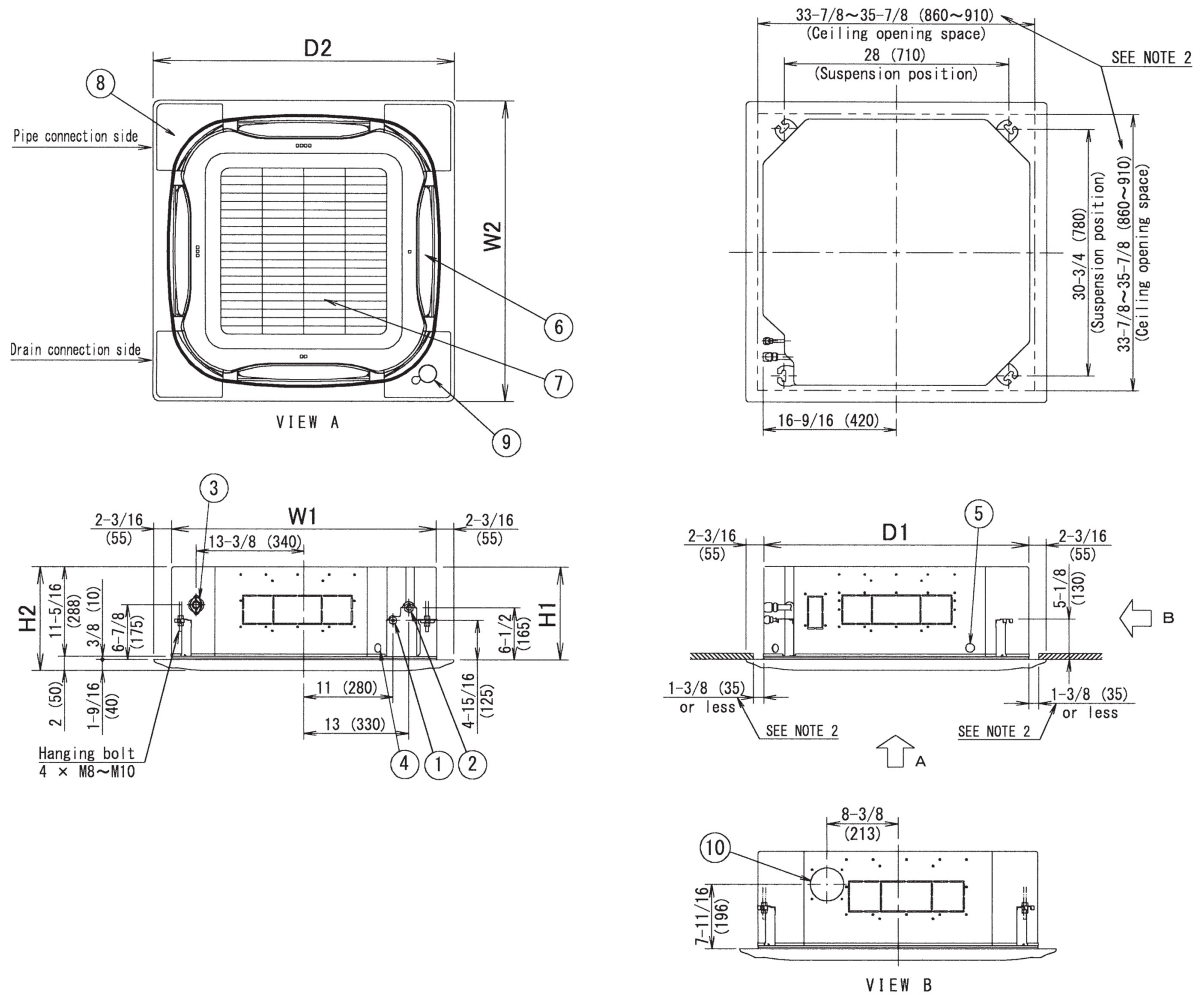
| INDOOR UNIT DETAILS | | | |
|--|-----------------------------|--------------------------------|---------------|
| Power Supply (V/Hz/Ph): | 208-230 / 60 / 1 | Airflow Rate (HH/H/L) (CFM): | 1,112/918/671 |
| Power Supply Connections: | L1, L2, Ground | Moisture Removal (Gal/hr): | |
| Min. Circuit Amps MCA (A): | 1.3 | Gas Pipe Connection (inch): | 5/8 |
| Max Overcurrent Protection (MOP) (A): | 15 | Liquid Pipe Connection (inch): | 3/8 |
| Dimensions (HxWxD) (in): | 11-5/16 x 33-1/16 x 33-1/16 | Condensate Connection (inch): | 1-1/4 |
| Net Weight (lb): | 58 | Sound Pressure (H/L) (dBA): | 38/32 |
| Ext. Static Pressure (Rated/Max) (inWg): | / | Sound Power Level (dBA): | |

Submittal Data Sheet

2.5-Ton Round Flow Sensing Cassette

FXFQ30TVJU

DIMENSIONAL DRAWING



Unit : in. (mm)

| ITEM | PART NAME | REMARK |
|------|--------------------------------|---|
| 1 | Liquid pipe connection | φ 3/8 (φ 9.5) Flare connection |
| 2 | Gas pipe connection | φ 5/8 (φ 15.9) Flare connection |
| 3 | Drain pipe connection | VP25 (O.D. φ 1-1/4 (φ 32), I.D. φ 1 (φ 25)) |
| 4 | Power supply entry hole | |
| 5 | Transmission wiring entry hole | |
| 6 | Air Outlet | |
| 7 | Air Inlet grille | |
| 8 | Corner decoration cover | |
| 9 | Sensor | Infrared presence sensor Infrared floor sensor |
| 10 | Knock out hole | φ 3-15/16 (φ 100) |

| | | |
|---------------|----|---------------|
| Without panel | H1 | 11-3/4 (298) |
| | W1 | 33-1/16 (840) |
| | D1 | 33-1/16 (840) |
| With panel | H2 | 13-5/16 (338) |
| | W2 | 37-3/8 (950) |
| | D2 | 37-3/8 (950) |

Notes) 1. Location of the nameplates:

- Unit body: on the control box cover.
- Decoration panel: on the panel frame at the motor side under the corner cover.

2. Make sure the spacing between the ceiling and the cassette is no more than 1-3/8" (35mm).
MAX ceiling opening: 35-7/8" (910mm).

3. When the conditions exceed 86°F (30°C) and RH 80% in the ceiling or fresh air is inducted into the ceiling an additional insulation is required (polyethylene foam, thickness 3/8" (10mm) or more).

Note: For additional dimensional data and clearance information, refer to Engineering Data