



## Submittal Data Sheet

2.5-Ton MSP Concealed Ducted Unit  
FXSQ30TAVJU

### PERFORMANCE

Indoor Unit Model No.	FXSQ30TAVJU	Indoor Unit Name:	2.5-Ton MSP Concealed Ducted Unit
Type:	Ducted	Rated Cooling Conditions:	Indoor (°F DB/WB): 80 / 67 Ambient (°F DB/WB): 95 / 75
Rated Cooling Capacity (Btu/hr):	30,000	Rated Heating Conditions:	Indoor (°F DB/WB): 70 / 60 Ambient (°F DB/WB): 47 / 43
Sensible Capacity (Btu/hr):	22,600	Rated Piping Length(ft):	
Cooling Input Power (kW):	0.230	Rated Height Separation (ft):	
Rated Heating Capacity (Btu/hr):	34,000		
Heating Input Power (kW):	0.23		

### INDOOR UNIT DETAILS

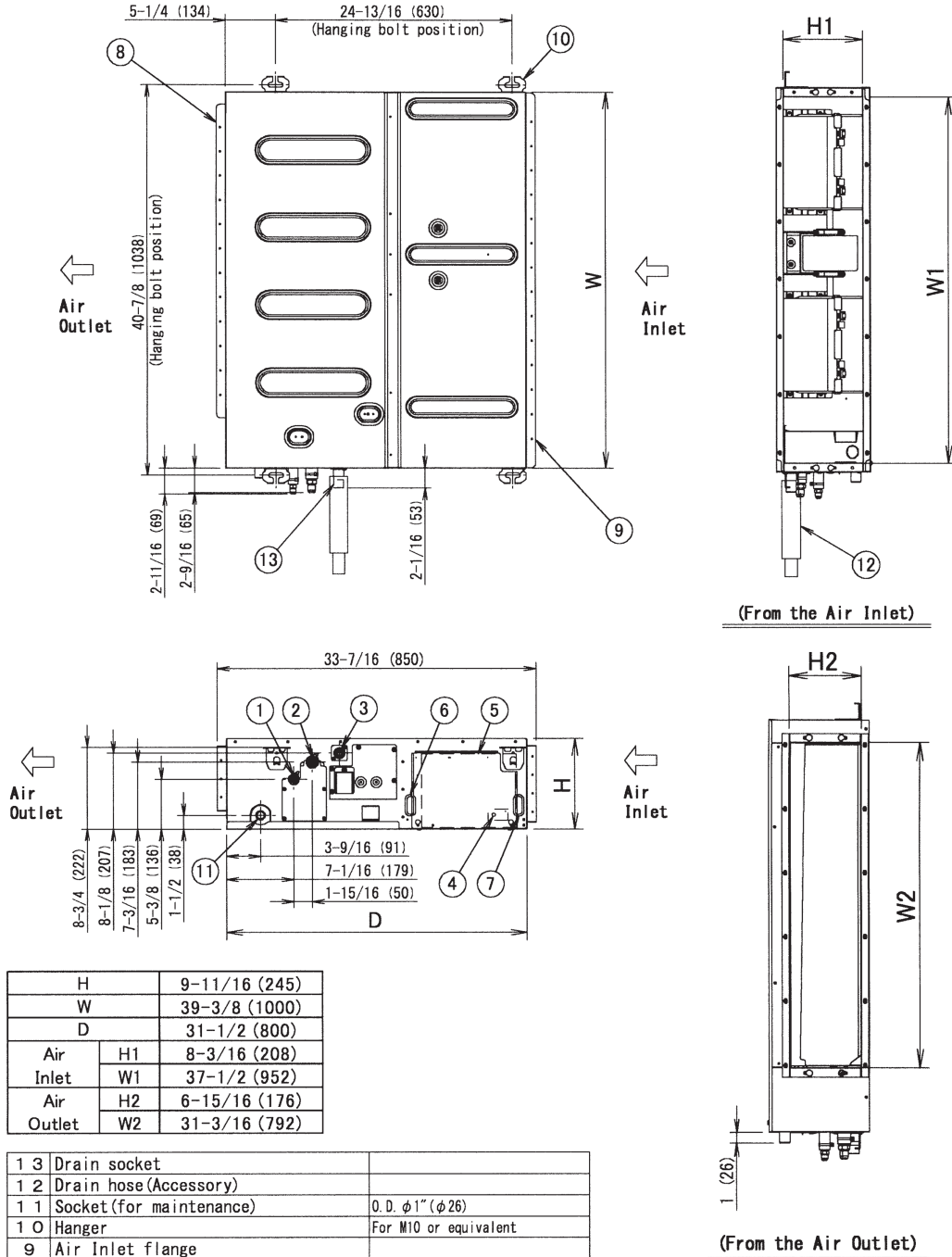
Power Supply (V/Hz/Ph):	208/230 / 60 / 1	Airflow Rate (H/M/L) (CFM):	812/689/565
Power Supply Connections:	L1, L2, G	Moisture Removal (Gal/hr):	
Min. Circuit Amps MCA (A):	1.8	Gas Pipe Connection (inch):	5/8
Max Overcurrent Protection (MOP) (A):	15	Liquid Pipe Connection (inch):	3/8
Dimensions (HxWxD) (in):	9-11/16 x 39-3/8 x 31-1/2	Condensate Connection (inch):	1
Net Weight (lb):	82	Sound Pressure (H/M/L) (dBA):	38/34/30
Ext. Static Pressure (Rated/Max) (inWg):	0.2 / 0.6	Sound Power Level (dBA):	65.5

## Submittal Data Sheet

2.5-Ton MSP Concealed Ducted Unit

FXSQ30TAVJU

## DIMENSIONAL DRAWING



Note: For additional dimensional data and clearance information, refer to Engineering Data