



## Submittal Data Sheets

0.6 to 2.0-Ton Slim Duct Ceiling Concealed Units

FXDQ\_MVJU

### FEATURES

- The slim height, at only 7-7/8", makes it suitable for most of the applications where attic / bulkhead space is limited
- With a sound level as low as 29dBA, these systems are among the quietest on the market
- Washable filter included
- Built-in condensate pump
- Blends unobtrusively with any interior decor; only the suction and discharge grills are visible



**VRV**







## Submittal Data Sheet

0.5-Ton Slim Duct Built-in Concealed Ceiling Unit

FXDQ07MVJU

### PERFORMANCE

Indoor Unit Model No.	FXDQ07MVJU	Indoor Unit Name:	0.5-Ton Slim Duct Built-in Concealed Ceiling Unit
Type:	Ducted	Rated Cooling Conditions:	Indoor (°F DB/WB): 80 / 67 Ambient (°F DB/WB): 95 / 75
Rated Cooling Capacity (Btu/hr):	7,500	Rated Heating Conditions:	Indoor (°F DB/WB): 70 / 70 Ambient (°F DB/WB): 47 / 43
Sensible Capacity (Btu/hr):	6,300	Rated Piping Length(ft):	
Cooling Input Power (kW):	0.090	Rated Height Separation (ft):	
Rated Heating Capacity (Btu/hr):	8,500		
Heating Input Power (kW):	0.07		

### INDOOR UNIT DETAILS

Power Supply (V/Hz/Ph):	208-230 / 60 / 1	Airflow Rate (H/L) (CFM):	280/226
Power Supply Connections:	L1, L2, Ground	Moisture Removal (Gal/hr):	
Min. Circuit Amps MCA (A):	0.90	Gas Pipe Connection (inch):	1/2
Max Overcurrent Protection (MOP) (A):		Liquid Pipe Connection (inch):	1/4
Dimensions (HxWxD) (in):	7-7/8 x 27-9/16 x 24-7/16	Condensate Connection (inch):	1-1/32
Panel (HxWxD) (in):		Sound Pressure (H/L) (dBA):	33/29
Net Weight (lb):	51	Sound Power Level (dBA):	51
Panel Weight (lb):		Ext. Static Pressure (Rated/Max) (inWg):	0.12 / 0.12

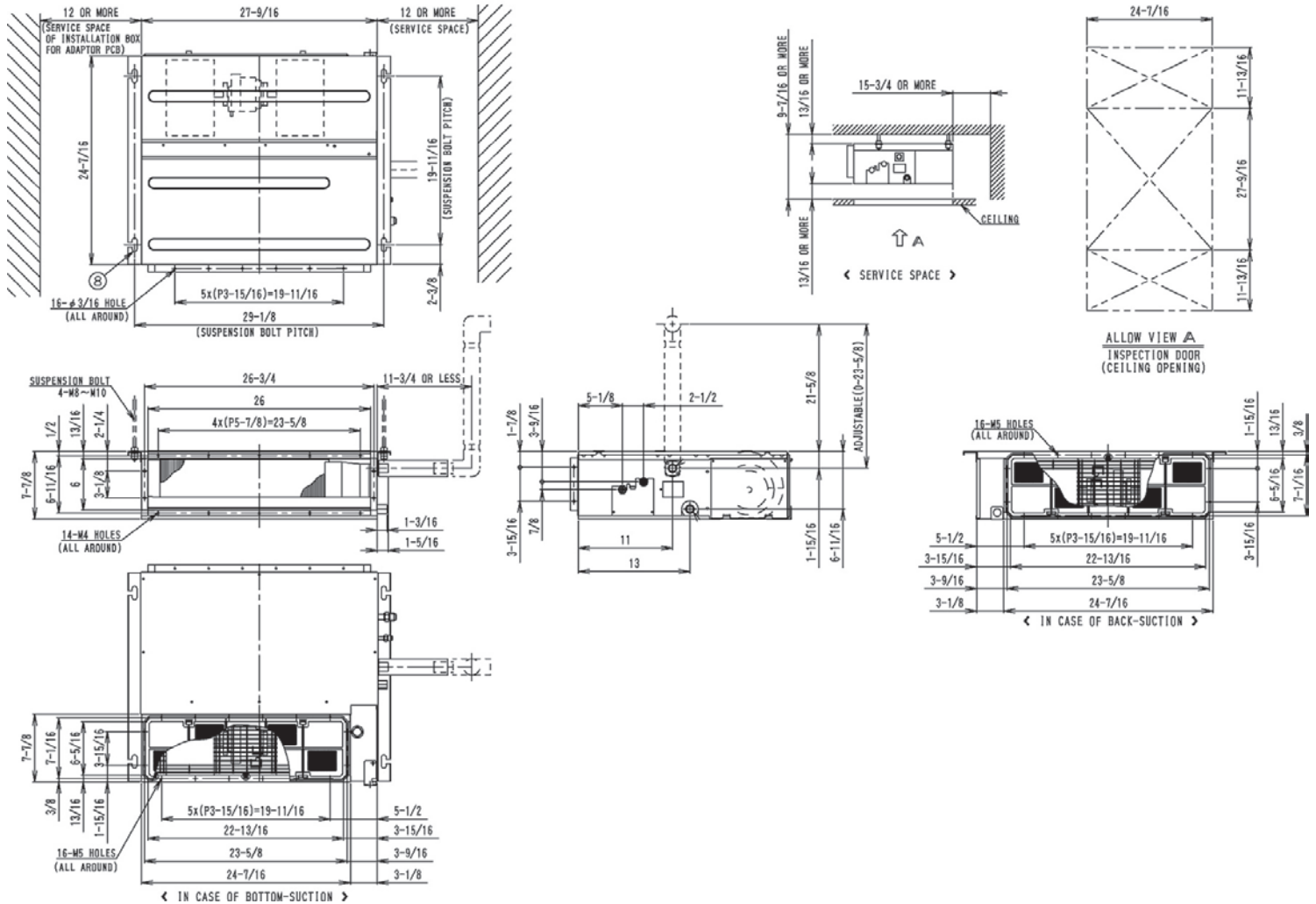
### Submittal Data Sheet

0.5-Ton Slim Duct Built-in Concealed Ceiling Unit

FXDQ07MVJU

## DIMENSIONAL DRAWING

FXD07/09/12MVJU  
Unit (in.)





## Submittal Data Sheet

0.75-Ton Slim Duct Built-in Concealed Ceiling Unit

FXDQ09MVJU

### PERFORMANCE

Indoor Unit Model No.	FXDQ09MVJU	Indoor Unit Name:	0.75-Ton Slim Duct Built-in Concealed Ceiling Unit
Type:	Ducted	Rated Cooling Conditions:	Indoor (°F DB/WB): 80 / 67 Ambient (°F DB/WB): 95 / 75
Rated Cooling Capacity (Btu/hr):	9,500	Rated Heating Conditions:	Indoor (°F DB/WB): 70 / 70 Ambient (°F DB/WB): 47 / 43
Sensible Capacity (Btu/hr):	7,300	Rated Piping Length(ft):	
Cooling Input Power (kW):	0.090	Rated Height Separation (ft):	
Rated Heating Capacity (Btu/hr):	10,500		
Heating Input Power (kW):	0.07		

### INDOOR UNIT DETAILS

Power Supply (V/Hz/Ph):	208-230 / 60 / 1	Airflow Rate (H/L) (CFM):	280/226
Power Supply Connections:	L1, L2, Ground	Moisture Removal (Gal/hr):	
Min. Circuit Amps MCA (A):	0.90	Gas Pipe Connection (inch):	1/2
Max Overcurrent Protection (MOP) (A):		Liquid Pipe Connection (inch):	1/4
Dimensions (HxWxD) (in):	7-7/8 x 27-9/16 x 24-7/16	Condensate Connection (inch):	1-1/32
Panel (HxWxD) (in):		Sound Pressure (H/L) (dBA):	33/29
Net Weight (lb):	51	Sound Power Level (dBA):	51
Panel Weight (lb):		Ext. Static Pressure (Rated/Max) (inWg):	0.12 / 0.12

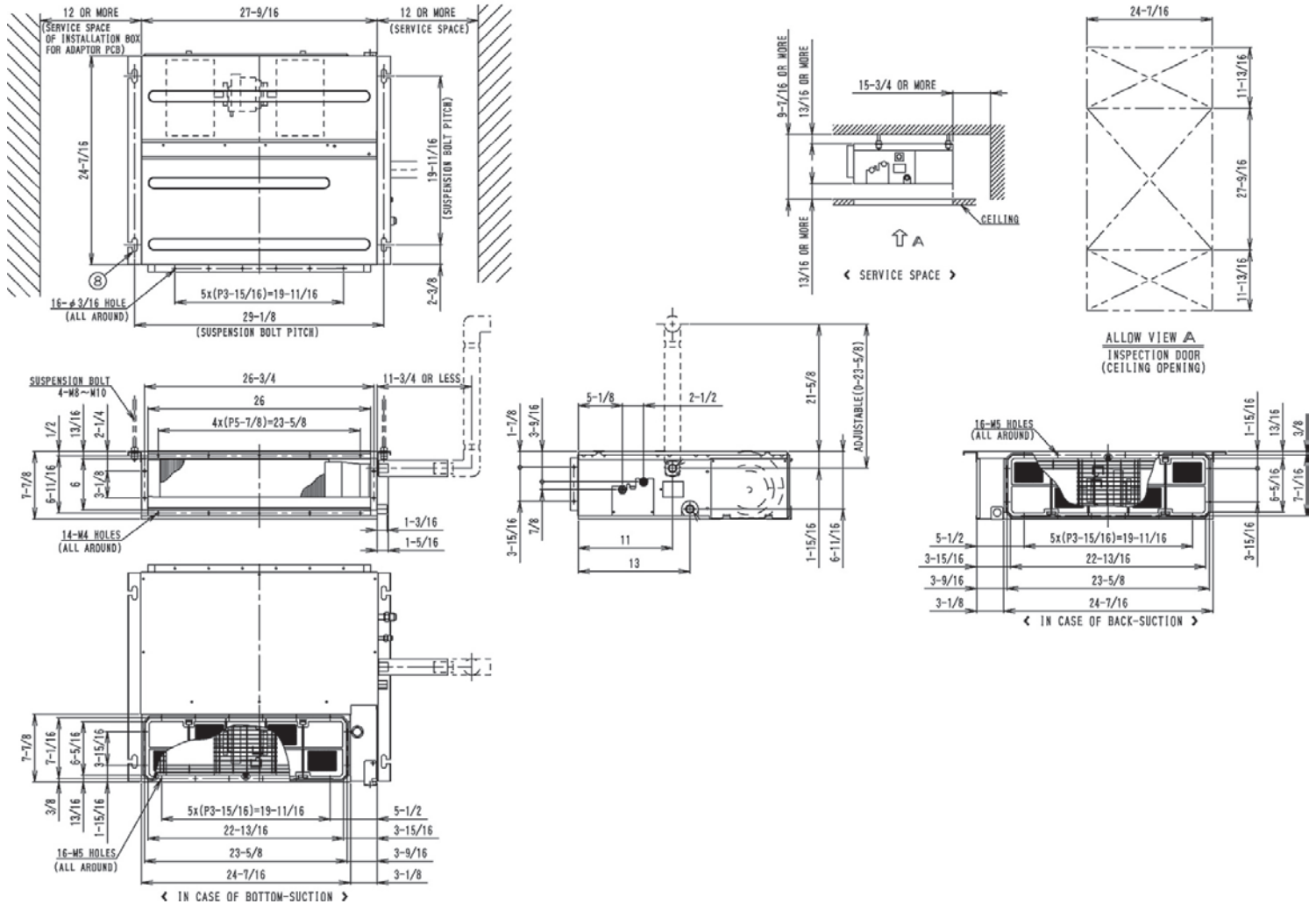
### Submittal Data Sheet

0.75-Ton Slim Duct Built-in Concealed Ceiling Unit

FXDQ09MVJU

## DIMENSIONAL DRAWING

FXD07/09/12MVJU  
Unit (in.)





## Submittal Data Sheet

1.0-Ton Slim Duct Built-in Concealed Ceiling Unit

FXDQ12MVJU

### PERFORMANCE

Indoor Unit Model No.	FXDQ12MVJU	Indoor Unit Name:	1.0-Ton Slim Duct Built-in Concealed Ceiling Unit
Type:	Ducted	Rated Cooling Conditions:	Indoor (°F DB/WB): 80 / 67 Ambient (°F DB/WB): 95 / 75
Rated Cooling Capacity (Btu/hr):	12,000	Rated Heating Conditions:	Indoor (°F DB/WB): 70 / 70 Ambient (°F DB/WB): 47 / 43
Sensible Capacity (Btu/hr):	8,800	Rated Piping Length(ft):	
Cooling Input Power (kW):	0.100	Rated Height Separation (ft):	
Rated Heating Capacity (Btu/hr):	13,500		
Heating Input Power (kW):	0.08		

### INDOOR UNIT DETAILS

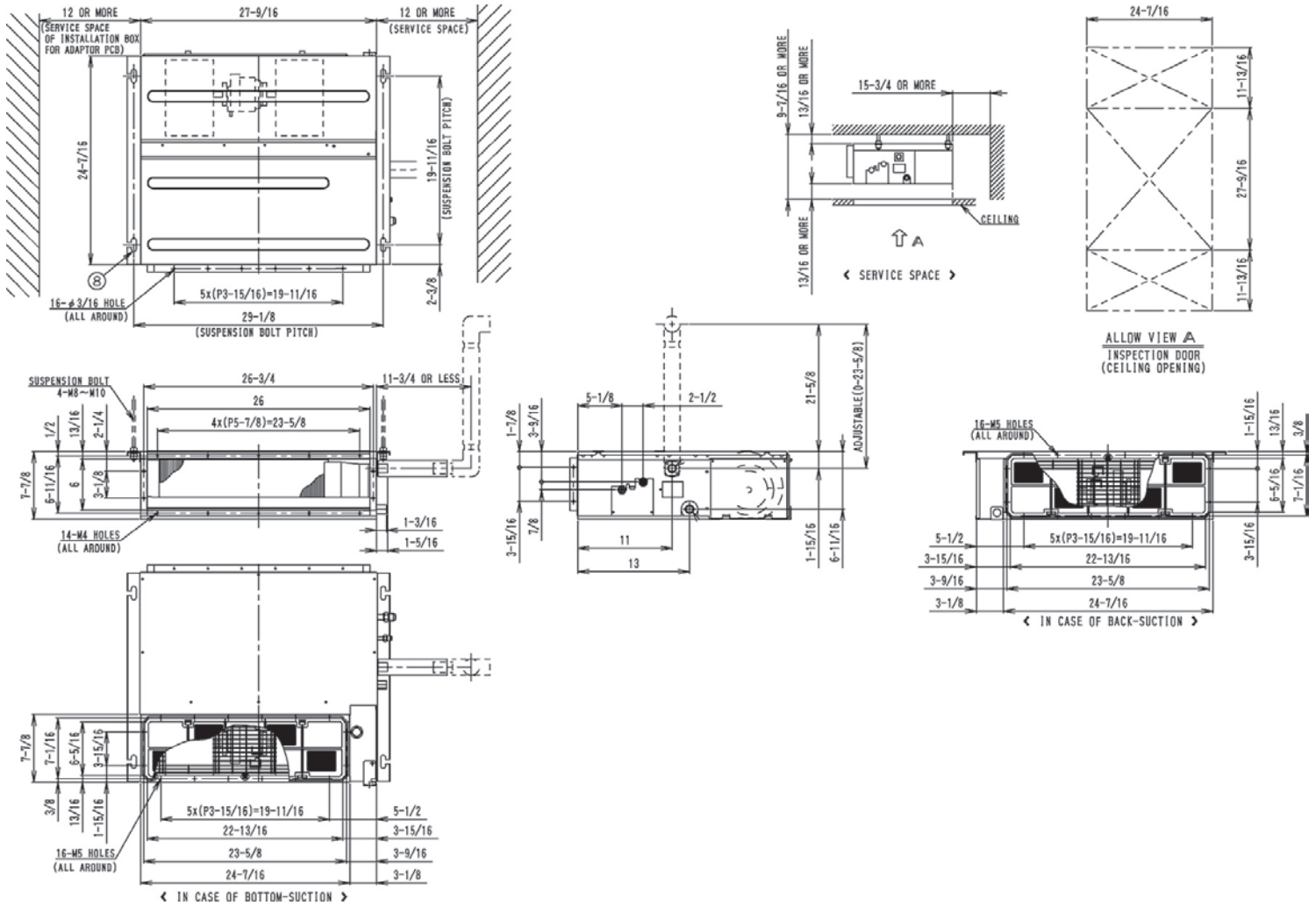
Power Supply (V/Hz/Ph):	208-230 / 60 / 1	Airflow Rate (H/L) (CFM):	280/226
Power Supply Connections:	L1, L2, Ground	Moisture Removal (Gal/hr):	
Min. Circuit Amps MCA (A):	0.90	Gas Pipe Connection (inch):	1/2
Max Overcurrent Protection (MOP) (A):		Liquid Pipe Connection (inch):	1/4
Dimensions (HxWxD) (in):	7-7/8 x 27-9/16 x 24-7/16	Condensate Connection (inch):	1-1/32
Panel (HxWxD) (in):		Sound Pressure (H/L) (dBA):	33/29
Net Weight (lb):	51	Sound Power Level (dBA):	51
Panel Weight (lb):		Ext. Static Pressure (Rated/Max) (inWg):	0.12 / 0.12

### Submittal Data Sheet

1.0-Ton Slim Duct Built-in Concealed Ceiling Unit  
FXDQ12MVJU

## DIMENSIONAL DRAWING

FXD07/09/12MVJU  
Unit (in.)







## Submittal Data Sheet

1.5-Ton Slim Duct Built-in Concealed Ceiling Unit

FXDQ18MVJU

### PERFORMANCE

Indoor Unit Model No.	FXDQ18MVJU	Indoor Unit Name:	1.5-Ton Slim Duct Built-in Concealed Ceiling Unit
Type:	Ducted	Rated Cooling Conditions:	Indoor (°F DB/WB): 80 / 67 Ambient (°F DB/WB): 95 / 75
Rated Cooling Capacity (Btu/hr):	18,000	Rated Heating Conditions:	Indoor (°F DB/WB): 70 / 70 Ambient (°F DB/WB): 47 / 43
Sensible Capacity (Btu/hr):	12,900	Rated Piping Length(ft):	
Cooling Input Power (kW):	0.190	Rated Height Separation (ft):	
Rated Heating Capacity (Btu/hr):	20,000		
Heating Input Power (kW):	0.17		

### INDOOR UNIT DETAILS

Power Supply (V/Hz/Ph):	208-230 / 60 / 1	Airflow Rate (H/L) (CFM):	440/350
Power Supply Connections:	L1, L2, Ground	Moisture Removal (Gal/hr):	
Min. Circuit Amps MCA (A):	1.30	Gas Pipe Connection (inch):	1/2
Max Overcurrent Protection (MOP) (A):		Liquid Pipe Connection (inch):	1/4
Dimensions (HxWxD) (in):	7-7/8 x 35-7/16 x 24-7/16	Condensate Connection (inch):	1-1/32
Panel (HxWxD) (in):		Sound Pressure (H/L) (dBA):	35/31
Net Weight (lb):	63	Sound Power Level (dBA):	53
Panel Weight (lb):		Ext. Static Pressure (Rated/Max) (inWg):	0.17 / 0.17

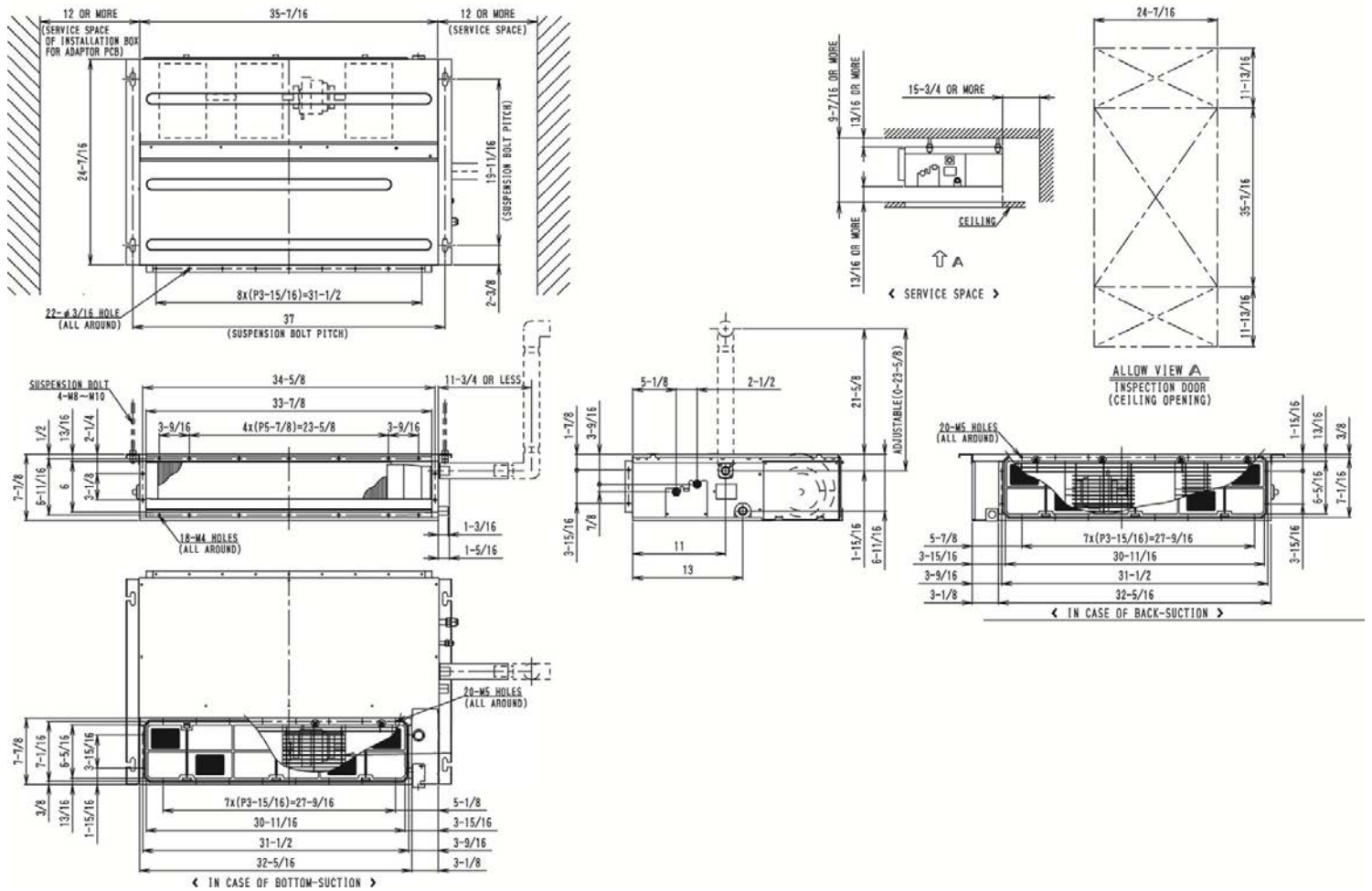
### Submittal Data Sheet

1.5-Ton Slim Duct Built-in Concealed Ceiling Unit

FXDQ18MVJU

## DIMENSIONAL DRAWING

FXDQ18MVJU  
Unit (in.)





## Submittal Data Sheet

2.0-Ton Slim Duct Built-in Concealed Ceiling Unit

FXDQ24MVJU

### PERFORMANCE

Indoor Unit Model No.	FXDQ24MVJU	Indoor Unit Name:	2.0-Ton Slim Duct Built-in Concealed Ceiling Unit
Type:	Ducted	Rated Cooling Conditions:	Indoor (°F DB/WB): 80 / 67 Ambient (°F DB/WB): 95 / 75
Rated Cooling Capacity (Btu/hr):	24,000	Rated Heating Conditions:	Indoor (°F DB/WB): 70 / 70 Ambient (°F DB/WB): 47 / 43
Sensible Capacity (Btu/hr):	16,400	Rated Piping Length(ft):	
Cooling Input Power (kW):	0.190	Rated Height Separation (ft):	
Rated Heating Capacity (Btu/hr):	27,000		
Heating Input Power (kW):	0.18		

### INDOOR UNIT DETAILS

Power Supply (V/Hz/Ph):	208-230 / 60 / 1	Airflow Rate (H/L) (CFM):	580/460
Power Supply Connections:	L1, L2, Ground	Moisture Removal (Gal/hr):	
Min. Circuit Amps MCA (A):	1.40	Gas Pipe Connection (inch):	5/8
Max Overcurrent Protection (MOP) (A):		Liquid Pipe Connection (inch):	3/8
Dimensions (HxWxD) (in):	7-7/8 x 43-5/16 x 24-7/16	Condensate Connection (inch):	1-1/32
Panel (HxWxD) (in):		Sound Pressure (H/L) (dBA):	36/32
Net Weight (lb):	71	Sound Power Level (dBA):	53
Panel Weight (lb):		Ext. Static Pressure (Rated/Max) (inWg):	0.17 / 0.17

### Submittal Data Sheet

2.0-Ton Slim Duct Built-in Concealed Ceiling Unit  
FXDQ24MVJU

## DIMENSIONAL DRAWING

FXDQ24MVJU  
Unit (in.)

